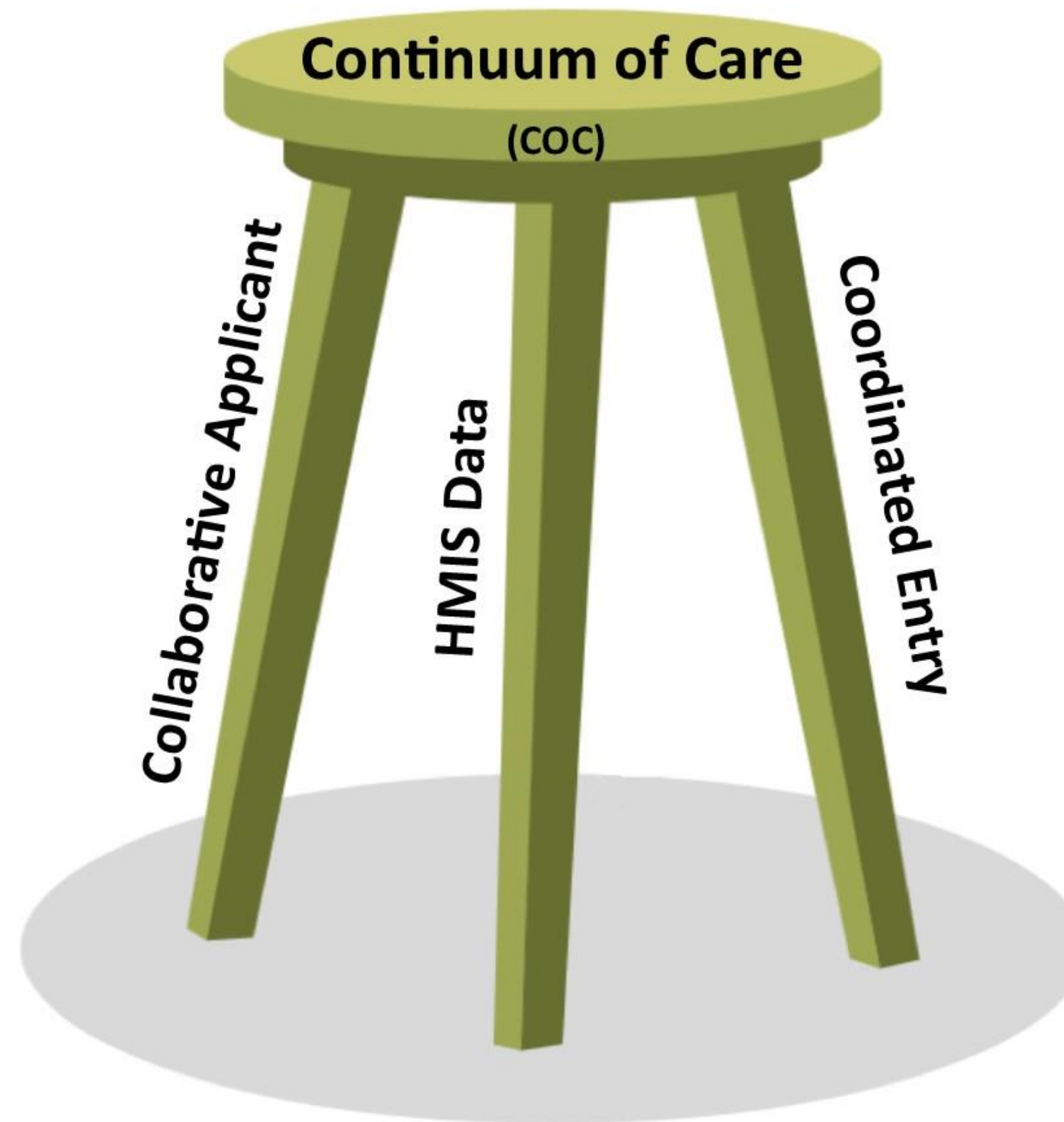




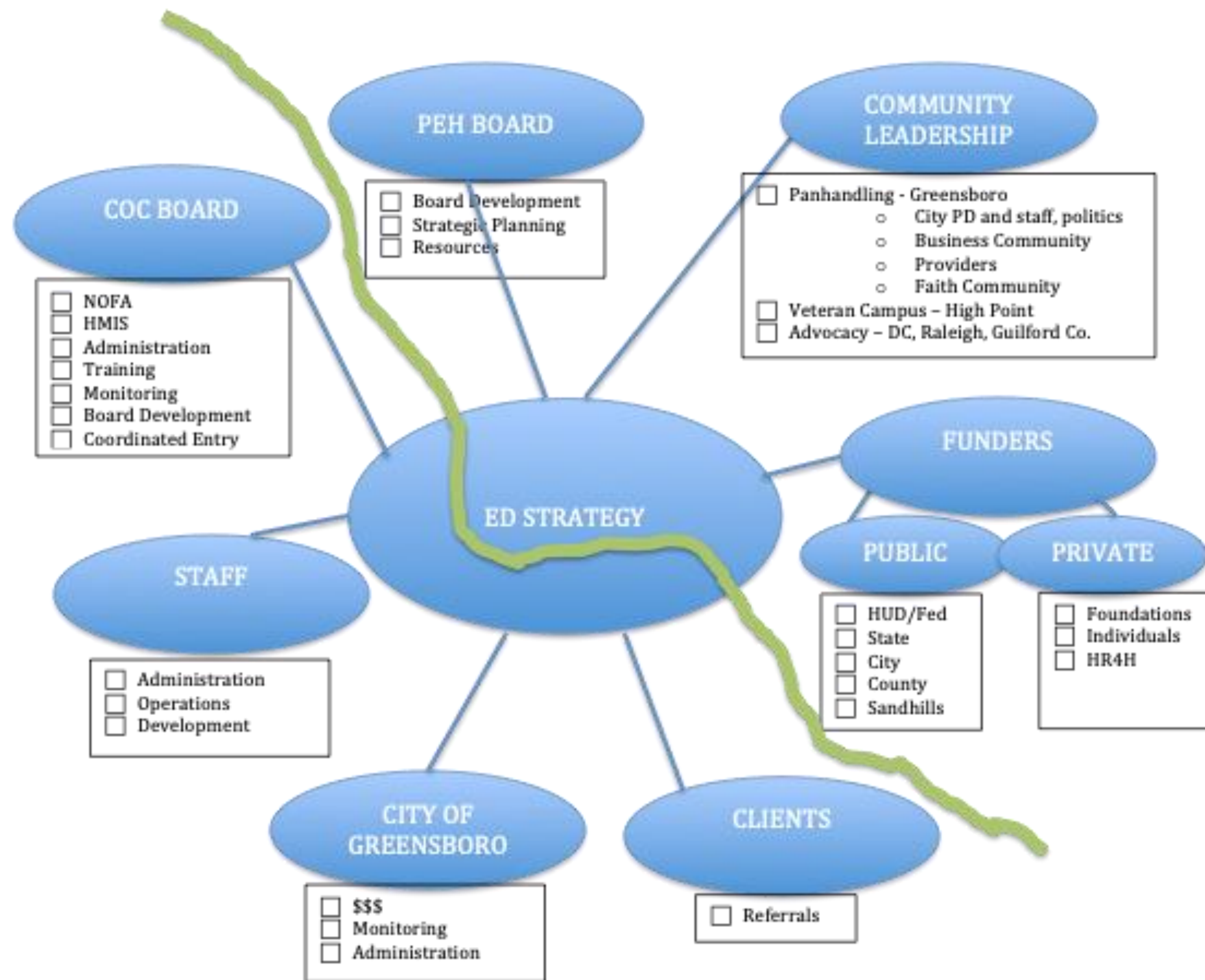
**PARTNERS
ENDING
HOMELESSNESS**

CONNECT | SUPPORT | ADVOCATE

Three Functions of Support



PEH EXECUTIVE DIRECTOR "MAP" - RELATIONSHIPS, STRATEGIES, PRIORITIES



Point in Time Count

2019

- 144 – Sheltered (Emergency & Transitional Housing)
- 33 – Unsheltered

2020

- 86 – Unsheltered
- 25 – Women