

# High Point's Electric Department

FEBRUARY 2016

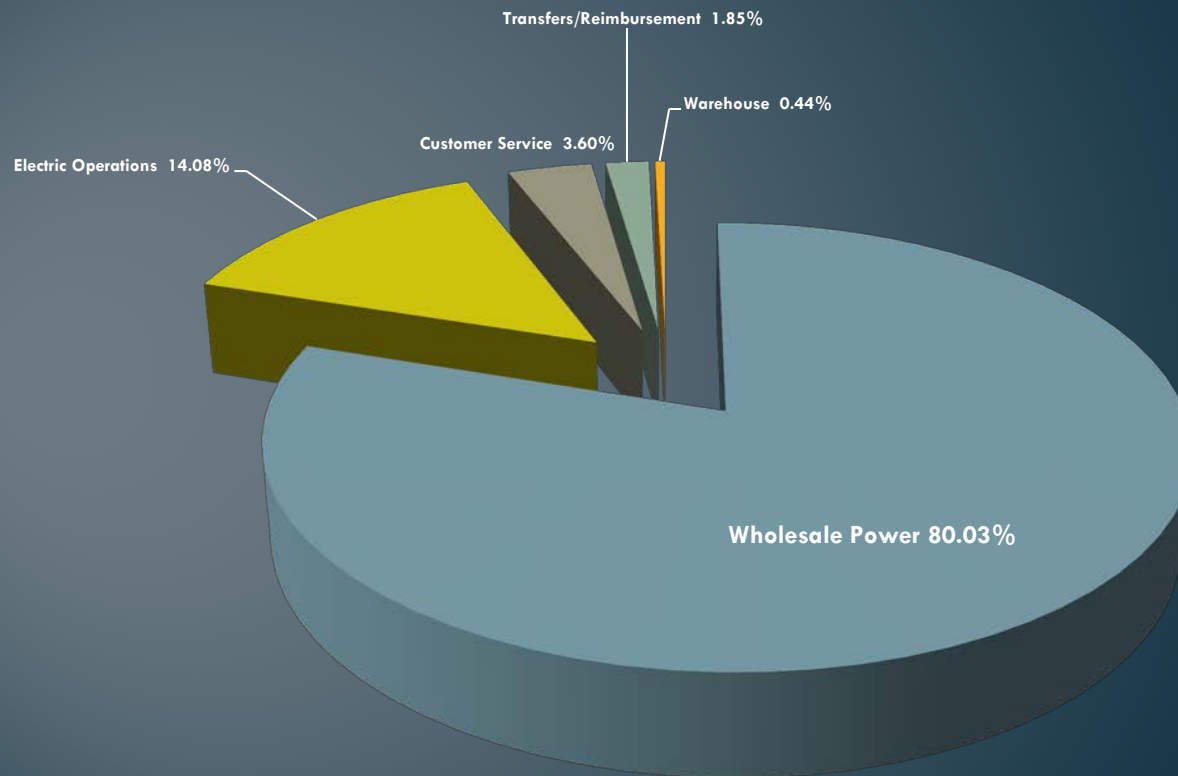


# The City of High Point's Electric System

- 406 Miles of Overhead Primary
- 344 Mile of Underground Primary
- 31,914 City Owned Poles
- 66 Sq. Miles of Service Area
- 14 Substations
- 40,387 Customers
  - Commercial 4,647
  - Industrial 271
  - Residential 35,469



# The Electric Fund

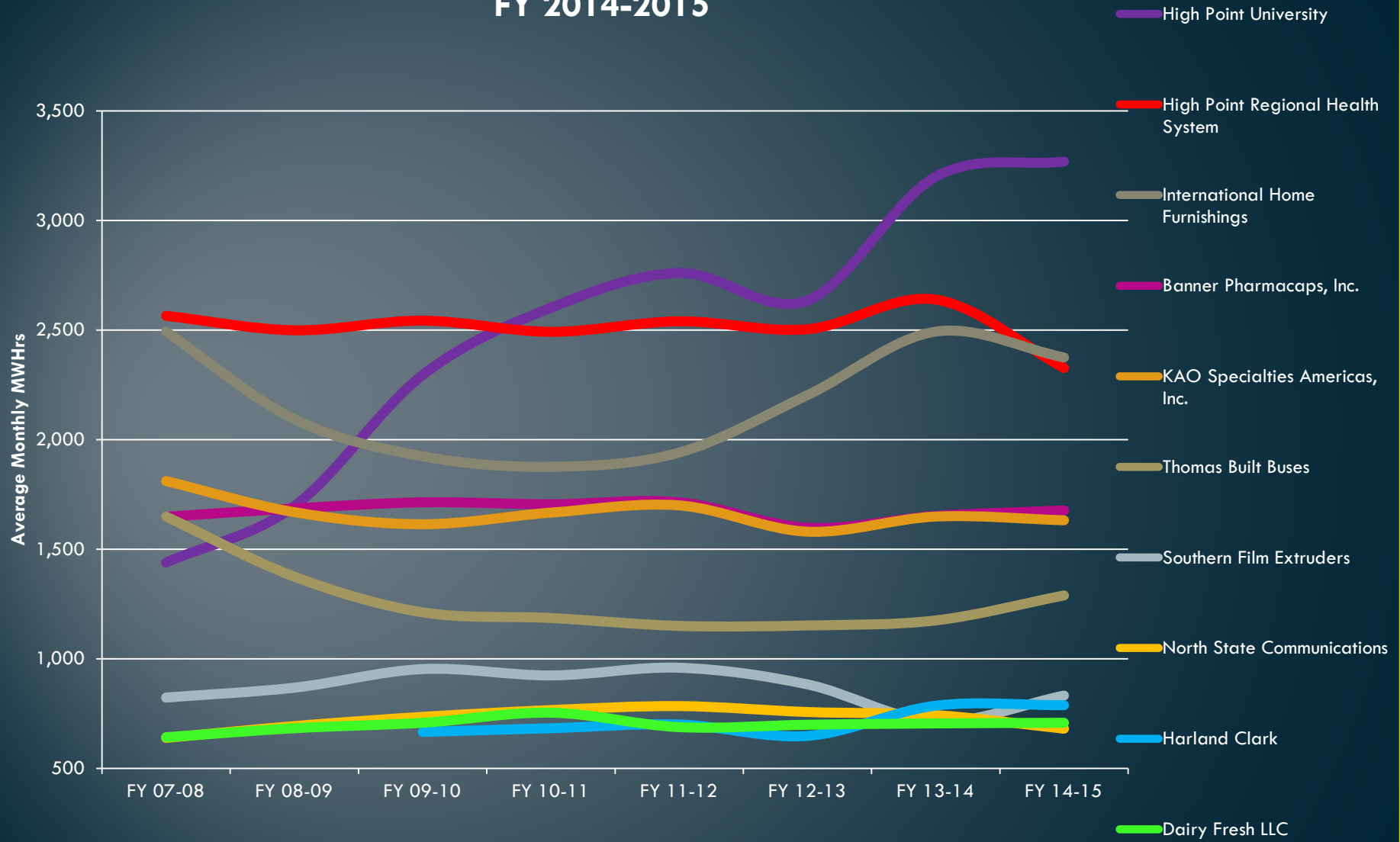


**Electric Fund**  
**FY 2015-16**  
**\$137,973,175**

# Overhead vs. Underground Costs

	Overhead	Underground
Distribution	\$590,000 to \$830,000 per mile	\$2.3 million to \$3.2 million per mile
100 kV Transmission	\$825,000 to \$2.1 million per mile	\$4.7 million to \$9.5 million per mile

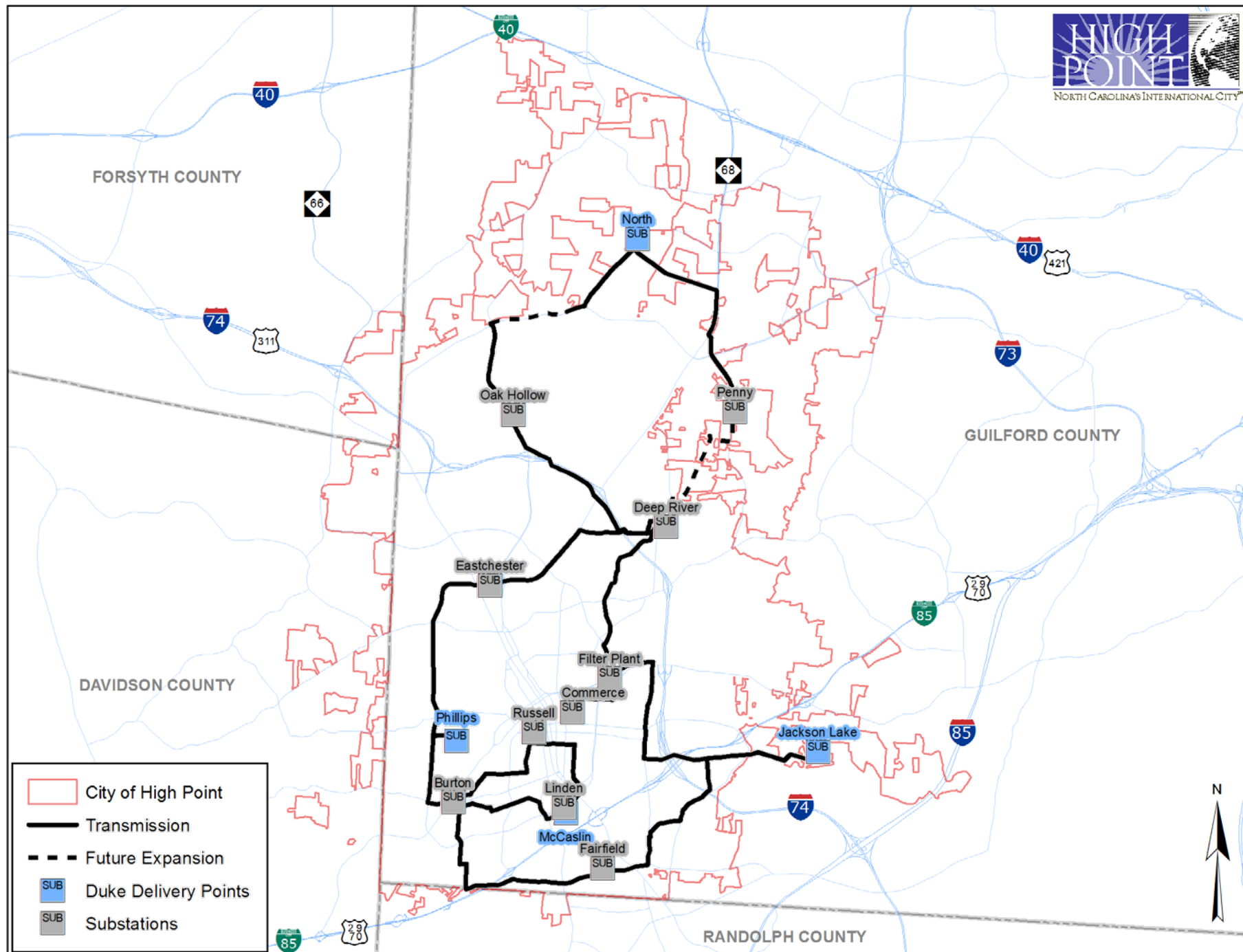
## Top 10 Electric Users FY 2014-2015





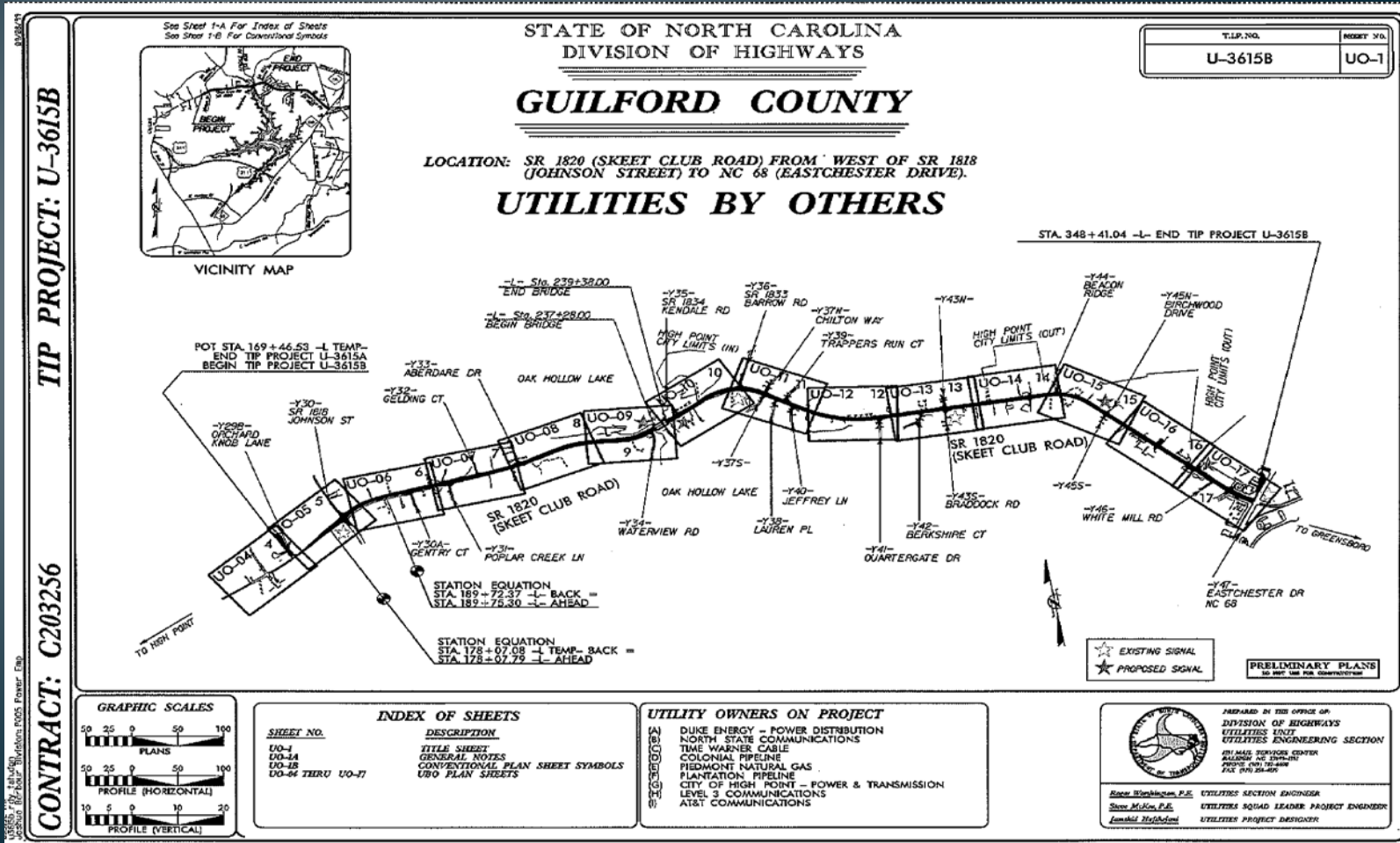
The background features a series of thin, vertical, slightly wavy lines in a light blue-grey color against a darker grey gradient. A solid teal horizontal band spans the width of the image, positioned in the lower half. The text 'Current Projects' is centered within this band.

# Current Projects



# Skeet Club Rd.

## \$2.5 M





REVISIONS			REVISIONS			SCALE, 1" = 10'-0"		
NO.	DATE	DESCRIPTION	NO.	DATE	DESCRIPTION			
						DATE ISSUED: 3-1-14		
						DESIGNED BY: J.L.P.		
						DRAWN BY: K.M.		
						CHECKED BY: J.L.F.		
						APPROVED BY: J.L.F.		

**SOUTHEASTERN**  
Consulting Engineers, Inc.  
600 West Gate, P.O. Box 740575, Charlotte, NC 28274  
TEL (704) 523-8145 FAX (704) 523-8117 License No. E-6181

CITY OF HIGH POINT  
HIGH POINT, NORTH CAROLINA

FILTER SUBSTATION  
SITE PLAN  
15 KV SUBSTATION ADDITION

DRAWING NO.:  
15-33-05

SHEET 1 OF 9

# Boundary Substation

## \$3.0 M





# Conversion of Linden Substation to 100 kV



The background of the slide features a series of thin, vertical, light blue lines of varying heights and positions, creating a textured, rain-like effect. A solid teal horizontal band spans the width of the slide, positioned in the lower half. The text 'Future projects' is centered within this band.

Future projects



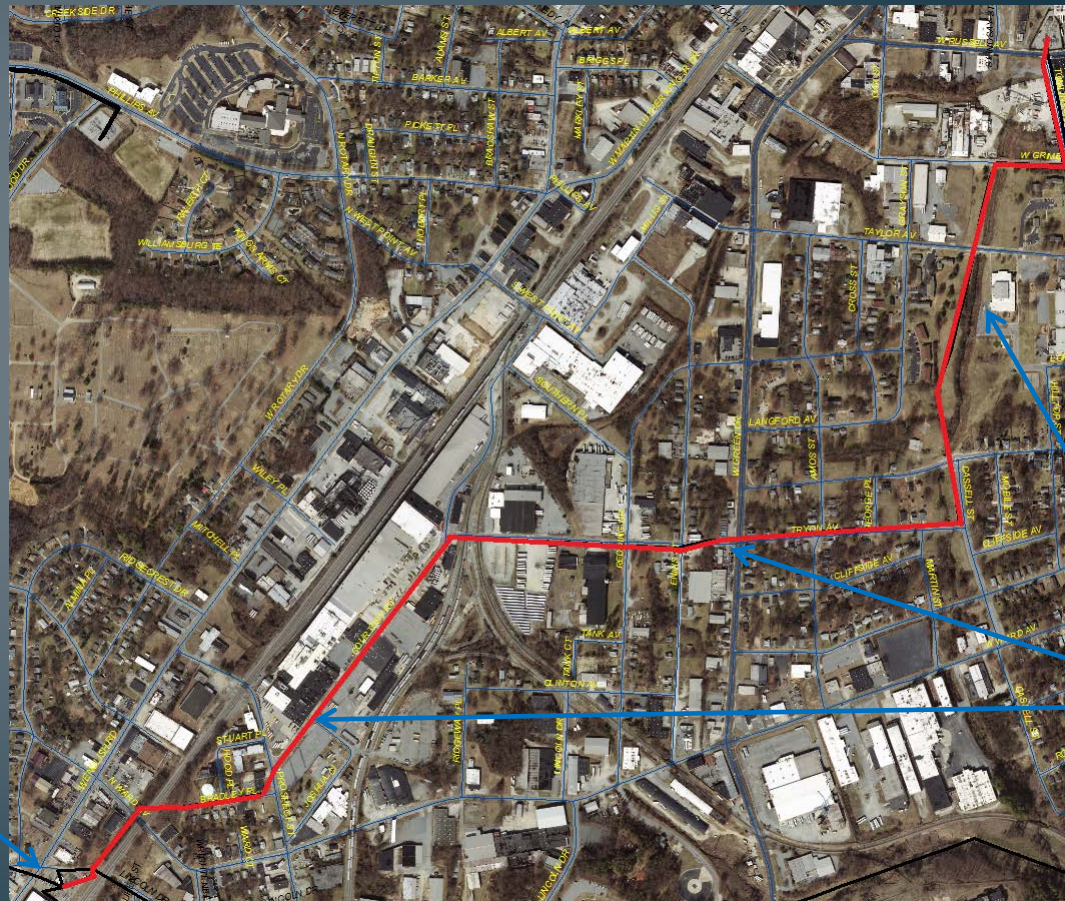
# Burton Substation 2<sup>nd</sup> Transformer Upgrade \$1.4 M





# Russell to Burton Conversion \$2.0 M

Burton Substation  
Rework Steel and  
69kV/100kV  
Transformer



Russell Substation  
Rework Steel  
and Transformers

Rework Lines From  
69 kV to 100 kV



# North Main Overhead to Underground Conversion





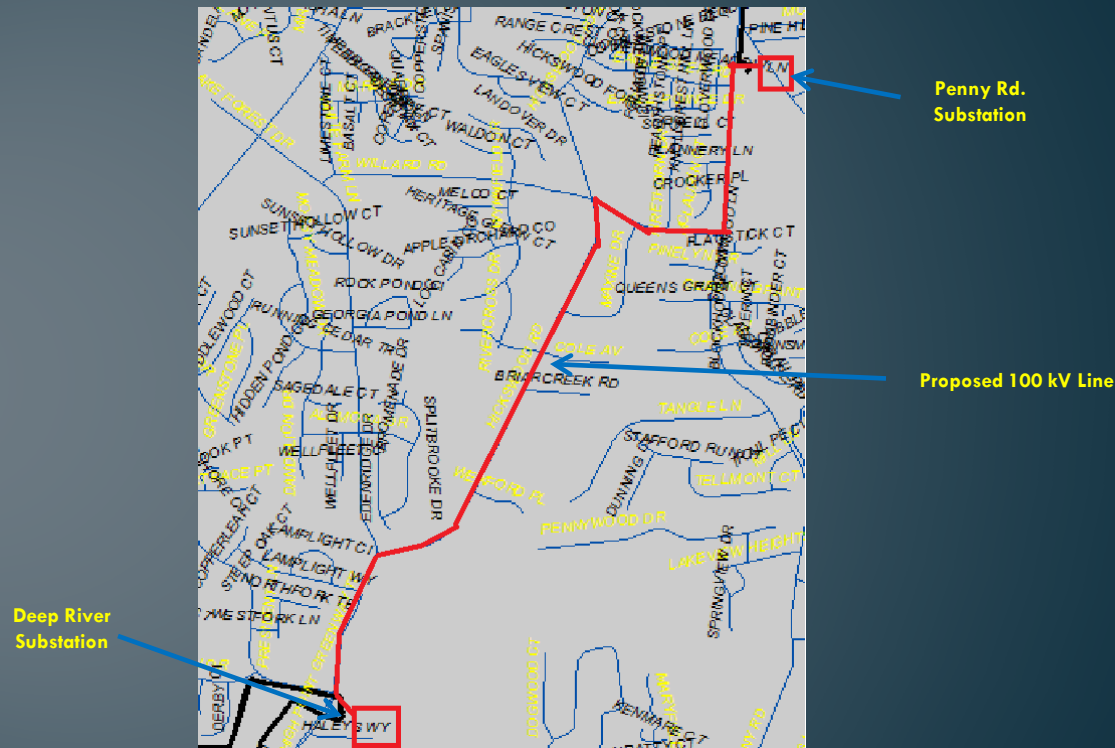
[illegible]

# Hammer Substation





# Deep River to Penny Rd. Transmission





# Phillips Substation Expansion



# Substation Transformers

- Jackson Lake T1 & T2
- Oak Hollow T1 & T2
- Fairfield T1 & T2
- Penny Rd T2
- Deep River T2
- Eastchester T1 & T2





# Medium Voltage Feeder Breaker Conversion



# On-going Projects

- Automated Meter Reading
- Load Management
- Area Outdoor Lighting
- Street Lighting
- Downtown Underground
- Overhead/Underground Conversions

