

# CITY OF HIGH POINT

## AGENDA ITEM



**Title:** Sole Source-Arm Assembly

**From:** Gary Smith, Fleet Director

**Public Hearing:** N/A

**Attachments:** Quote

**Meeting Date:** September 19, 2016

**Advertising Date /** N/A

**Advertised By:** N/A

---

### **PURPOSE:**

The Solid Waste Division of Public Services has a refuse truck that needs to have the complete side loading arm assembly replaced due to an accident on August 22, 2016. This is a sole source purchase because the part is available from only one source of supply which Amick Equipment. Amick Equipment is the only North Carolina New Way body distributor. The side loading arm assembly is not interchangeable with similar equipment of another manufacturer.

### **BACKGROUND:**

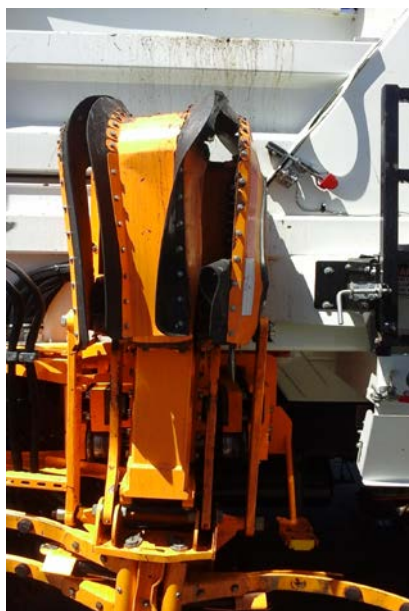
The side loading refuse truck was involved in an accident on August 22, 2016 on East Green Street. The price of \$45,256.53 is for the complete arm assembly and labor to install.

### **BUDGET IMPACT:**

Funds are available in 2016-17 budget

### **RECOMMENDATION / ACTION REQUESTED:**

The Fleet Services Department recommends purchasing the complete side loading arm assembly from Amick Equipment Company





# QUOTE

Bill To: CITY OF HIGH POINT  
 P O BOX 230  
 HIGH POINT NC 27261

Ship To: AMICK EQUIPMENT CO. INC.  
 2040 S. THIRD STREET, EXT.  
 "CUSTOMER PICKED UP"  
 MEBANE NC 27302

| INVOICE NUMBER                           | ORDER NUMBER | CUSTOMER   | PO NUMBER     | TERMS       | SALESPERSON |
|--|--------------|--|---------------|-------------|-------------|
| INVOICE DATE                             | ORDER DATE   | NUMBER   | ORDER COMMENT |             |             |
| 08/29/16                                 | 08/23/16     | 960  | Q05           | NET 10 DAYS | PTS         |
| NEW WAY ASL S/N 13748A-10-15 REPLACE ARM |              |  |               |             |             |
| UNITS                                    | U/M          | ITEM DESCRIPTION   | DISC          | UNIT PRICE  | AMOUNT      |
| ***** QUOTATION *****                    |              |  |               |             |             |
| 1  | EA           | 129068<br>COMPLETE ASL ARM ASSEMBLY<br>*HEAVY DUTY CHAIN OPT.* |               | 38,074.869  | 38,074.870  |
| 1  | EA           | NPN<br>FREIGHT FROM FACTORY                                    |               | 1,800.000   | 1,800.000   |
| 28                                       | Hrs          | LABOR<br>LABOR CHARGES   |               | 90.000      | 2,520.000   |
|  |              | Subtotal   |               |             | 42,394.87   |
|  |              | SALES TAX  |               |             | 2,861.66    |
|  |              | TAX #:   |               |             |             |
|  |              | NORTH CAROLINA SALES TAX 4.75%                                 |               | 2,013.76    |             |
|  |              | ALAMANCE   |               | 847.90      |             |
|  |              | Quote Total  |               |             | 45,256.53   |

THIS IS AN ESTIMATE BUT SHOULD NOT RUN MORE THAN  
 15% OF THE TOTAL VALUE SHOWN.