

CITY OF HIGH POINT

AGENDA ITEM



Title: **Right-Of-Way Encroachment RE-17-0002, RE-17-0007 & RE-17-0008**
(Mobilitie, LLC)

From: Lee Burnette, Planning & Development
Director

Meeting Date: August 21, 2017

Public Hearing: No

Advertising Date: Not Applicable

Advertised By: Not Applicable

Attachments: A. Staff Memo
B. Location Maps
C. Sample Renderings

PURPOSE:

A request by Mobilitie, LLC to install 3 omni-directional cellular antenna poles within various right-of-way locations in the City.

BACKGROUND:

Staff memo and the Technical Review Committee's recommendation is enclosed.

BUDGET IMPACT:

There is no budget impact.

RECOMMENDATION / ACTION REQUESTED:

A. On August 1, 2017 the Technical Review Committee recommended *approval* of Right-Of-Way Encroachments RE-17-0002, RE-17-0007 & RE-17-0008.

**CITY OF HIGH POINT
PLANNING AND DEVELOPMENT DEPARTMENT**

**RIGHT-OF-WAY ENCROACHMENT
RE-17-0002, RE-17-0007 & RE-17-0008**

August 21, 2017

Request	
Applicant: Mobilitie, LLC	Proposal: To allow 3 utility poles to be located in the public right-of-way in various locations throughout the City of High Point.

Adjacent Streets		
Name:	Classification:	R/W Width:
Various – see attached maps	Various – see attached maps	Various – see attached maps

Analysis

The applicant is requesting permission to allow 3 utility poles to be erected within the city street right-of-way in various areas of the City. The poles encroach in to the right-of-way at differing amounts dependent upon location.

The encroachments consist of 3 poles, ranging in height from 39-feet 4-inches to 48-feet 4-inches, with omni-directional cellular antennas mounted on the top of each pole, and additional equipment attached to or internal to the poles themselves.

The Technical Review Committee reviewed these three requests on August 1, 2017, and determined that the proposed encroachments would not affect public safety or interfere with maintenance needs.

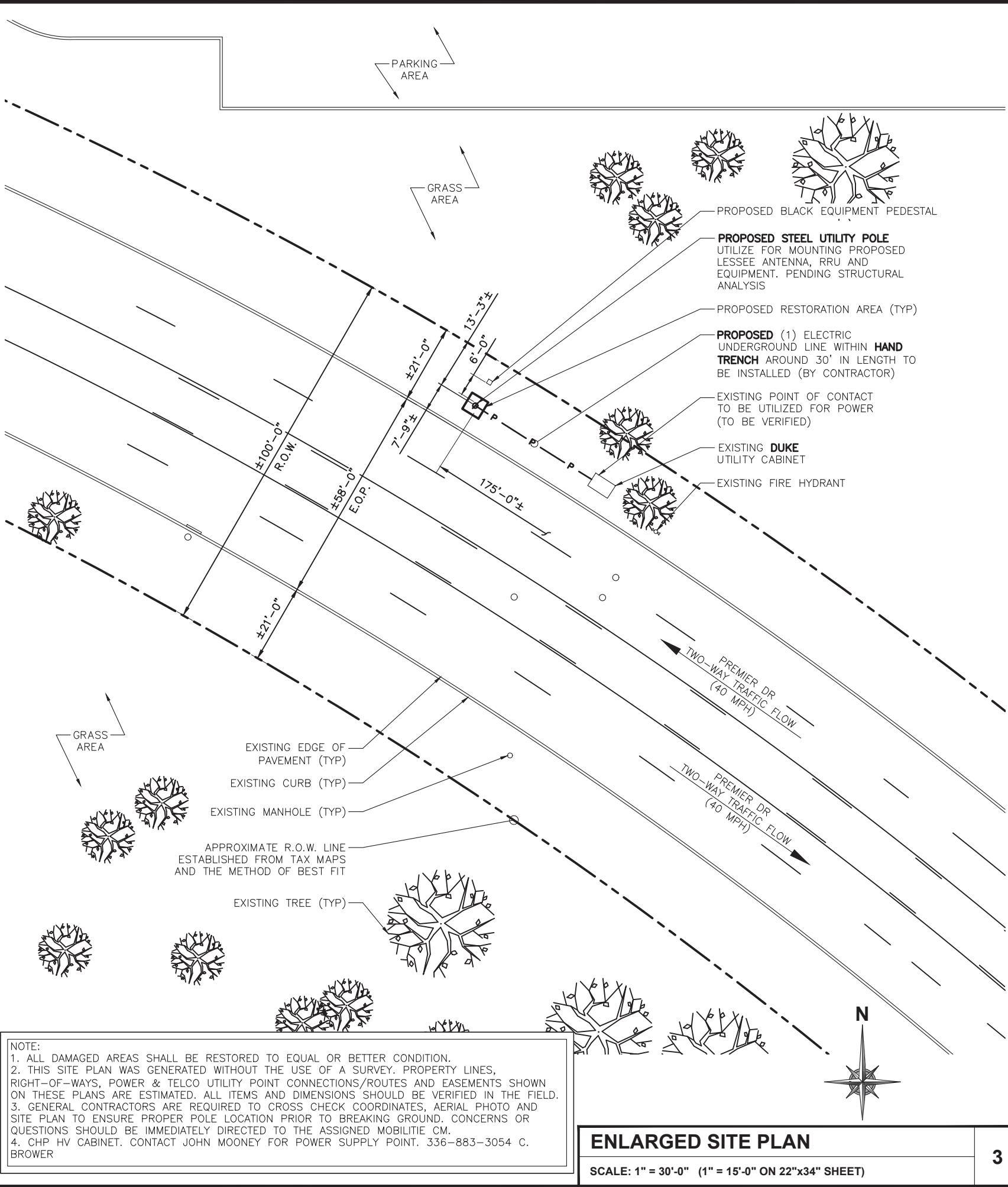
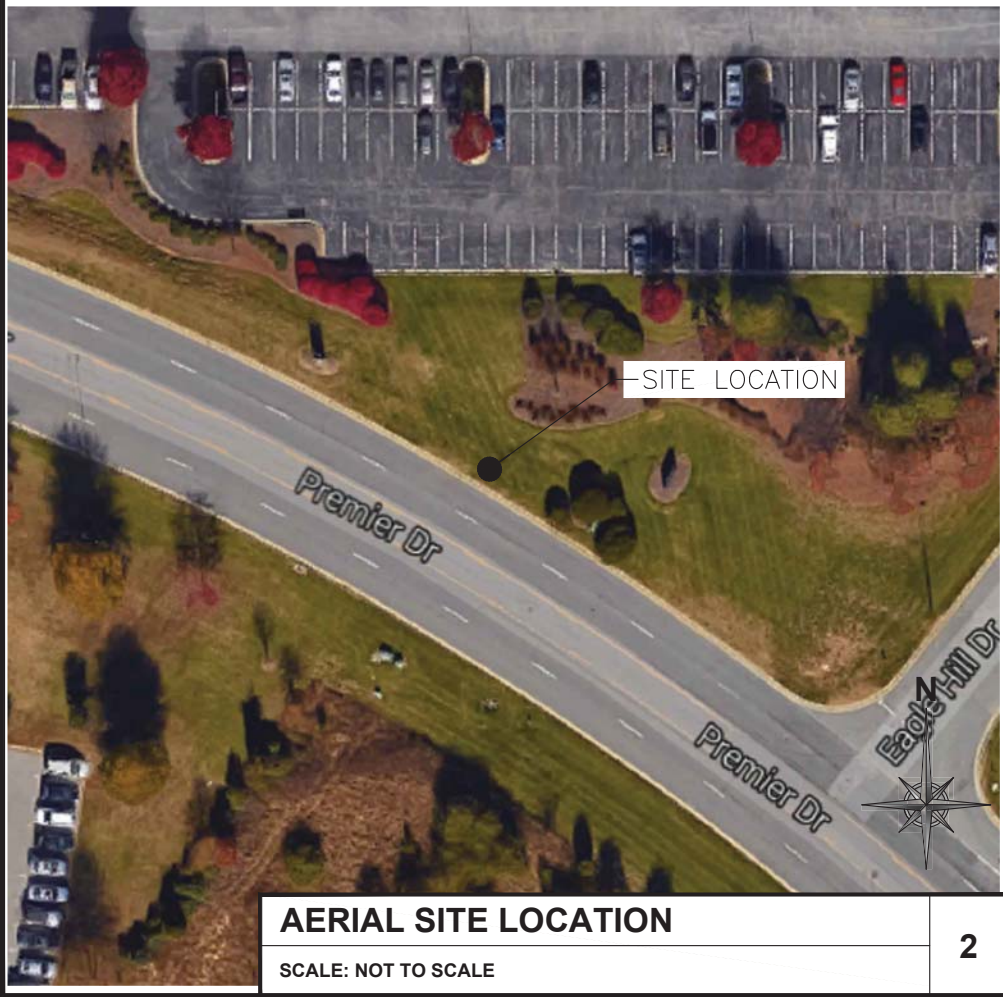
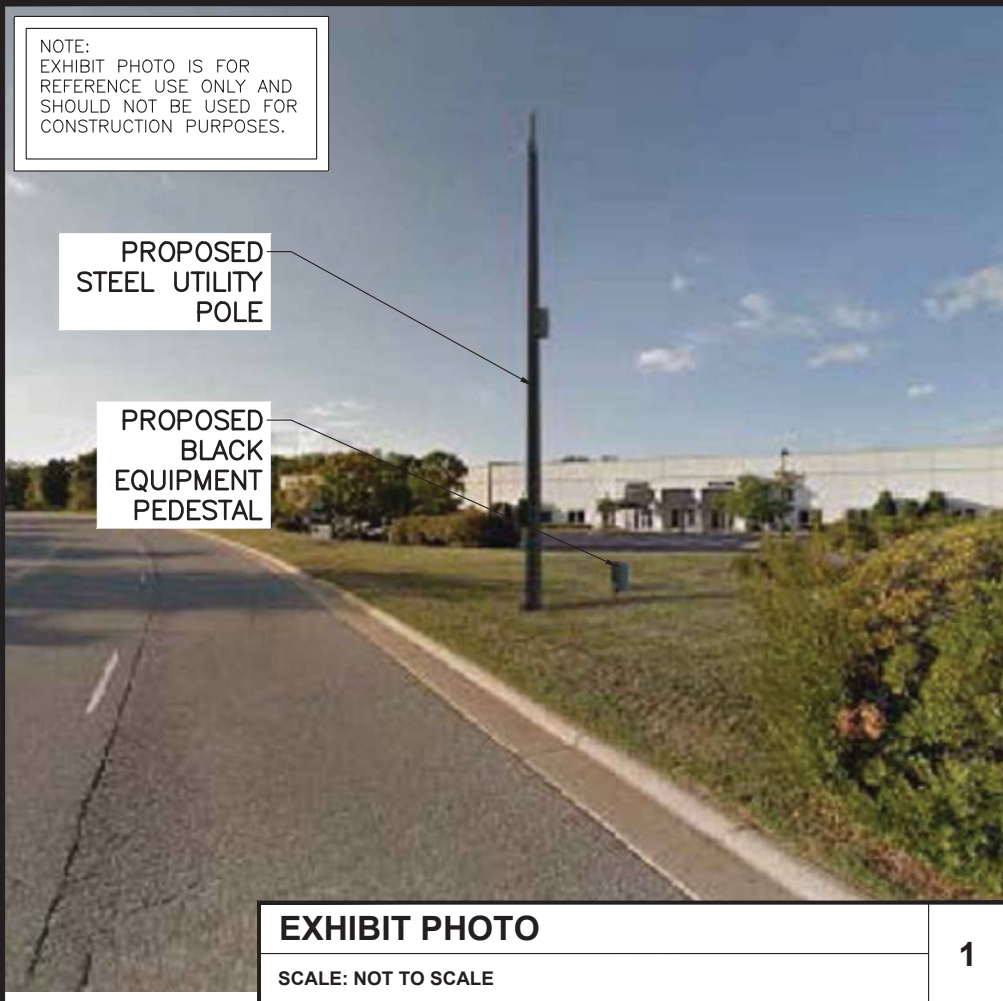
The pole renderings are attached, as well as a site plan depicting the location for each of the three proposed poles.

Recommendation

Based upon TRC's review, the existing structure will not affect public safety or interfere with street or utility maintenance. Staff recommends approval of this requested right-of-way encroachment.

Report Preparation

This report was prepared by Planning and Development Department staff member Justin S. Westbrook, CZO and was reviewed by Robert L. Robbins, AICP and G. Lee Burnette, AICP.



mobilitie

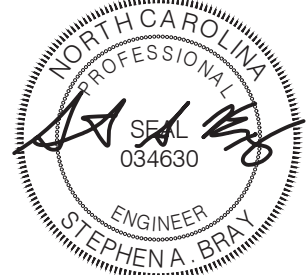
RE-17-0002

PROJECT NO:	9NCB002110B
DRAWN BY:	RC
CHECKED BY:	SJB

E	05-25-17	REVISION
D	04-18-17	REVISION
C	04-12-17	REVISION
B	02-21-17	REVISION

KMB DESIGN GROUP, LLC
FIRM LICENSE: P-0841

Stephen A. Bray
PROFESSIONAL ENGINEER



NC LICENSE: 034630 5/25/17

IT IS A VIOLATION OF THE LAW FOR ANY
PERSON, UNLESS THEY ARE ACTING UNDER THE
DIRECTION OF A LICENSED PROFESSIONAL
ENGINEER, TO ALTER THIS DOCUMENT

NOT FOR
CONSTRUCTION

GB90XS517B
HIGH POINT, NC 27265
PROPOSED 45'-0" STEEL POLE

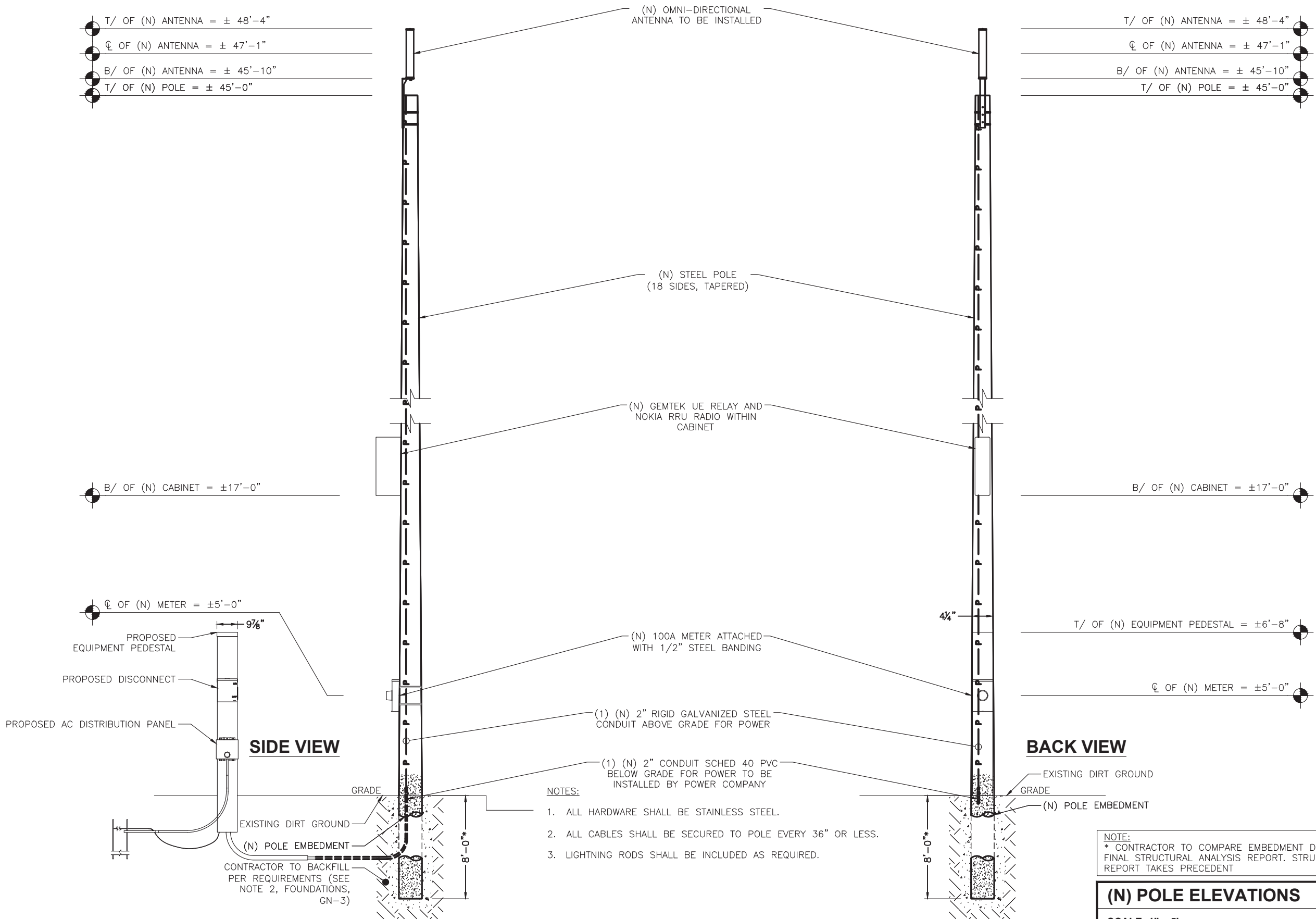
SHEET TITLE
EXHIBIT PHOTO & SITE PLAN

SHEET NUMBER
SP-1

NOTE:
1. POLE AND ALL EQUIPMENT TO BE PAINTED BLACK.
2. BUILDING PERMIT IS TO BE APPLIED FOR, CC PLANS SUBMITTED/APPROVED AND PERMIT ISSUED BEFORE INSTALLATION CAN TAKE PLACE.

T/ OF (N) ANTENNA = ± 48'-4"
CL OF (N) ANTENNA = ± 47'-1"
B/ OF (N) ANTENNA = ± 45'-10"
T/ OF (N) POLE = ± 45'-0"

T/ OF (N) ANTENNA = ± 48'-4"
CL OF (N) ANTENNA = ± 47'-1"
B/ OF (N) ANTENNA = ± 45'-10"
T/ OF (N) POLE = ± 45'-0"



- NOTES:
1. ALL HARDWARE SHALL BE STAINLESS STEEL.
 2. ALL CABLES SHALL BE SECURED TO POLE EVERY 36" OR LESS.
 3. LIGHTNING RODS SHALL BE INCLUDED AS REQUIRED.

NOTE:
* CONTRACTOR TO COMPARE EMBEDMENT DEPTH WITH FINAL STRUCTURAL ANALYSIS REPORT. STRUCTURAL REPORT TAKES PRECEDENT

(N) POLE ELEVATIONS
SCALE: 1" = 5'

mobilitie

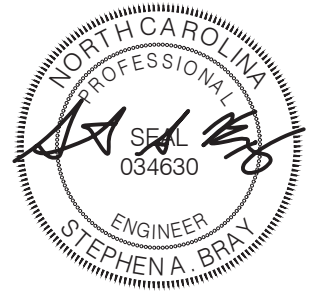
RE-17-0002

PROJECT NO: 9NCB002110B
DRAWN BY: RC
CHECKED BY: SJB

E	05-25-17	REVISION
D	04-18-17	REVISION
C	04-12-17	REVISION
B	02-21-17	REVISION

KMB DESIGN GROUP, LLC
FIRM LICENSE: P-0841

Stephen A. Bray
PROFESSIONAL ENGINEER



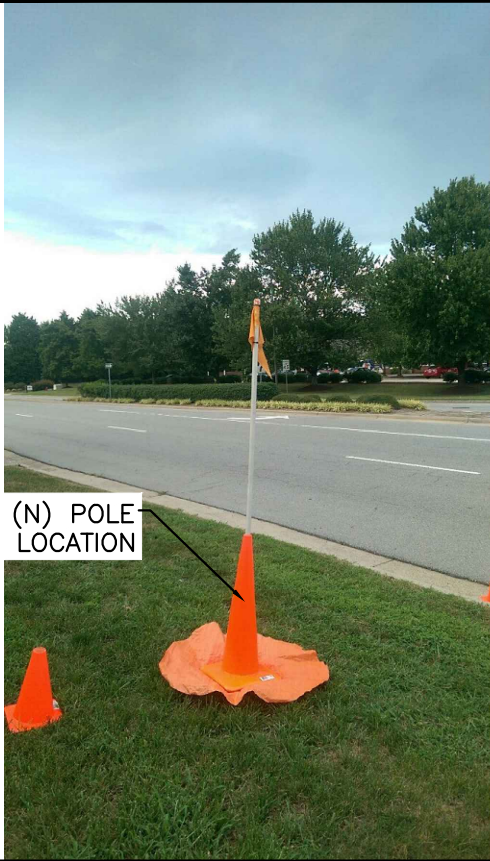
NC LICENSE: 034630 5/25/17
IT IS A VIOLATION OF THE LAW FOR ANY PERSON, UNLESS THEY ARE ACTING UNDER THE DIRECTION OF A LICENSED PROFESSIONAL ENGINEER, TO ALTER THIS DOCUMENT

NOT FOR CONSTRUCTION

GB90XS517B
HIGH POINT, NC 27265
PROPOSED 45'-0" STEEL POLE

SHEET TITLE
POLE ELEVATIONS

SHEET NUMBER
EV-1



(N) POLE LOCATION

EXHIBIT PHOTO

SCALE: NOT TO SCALE

1



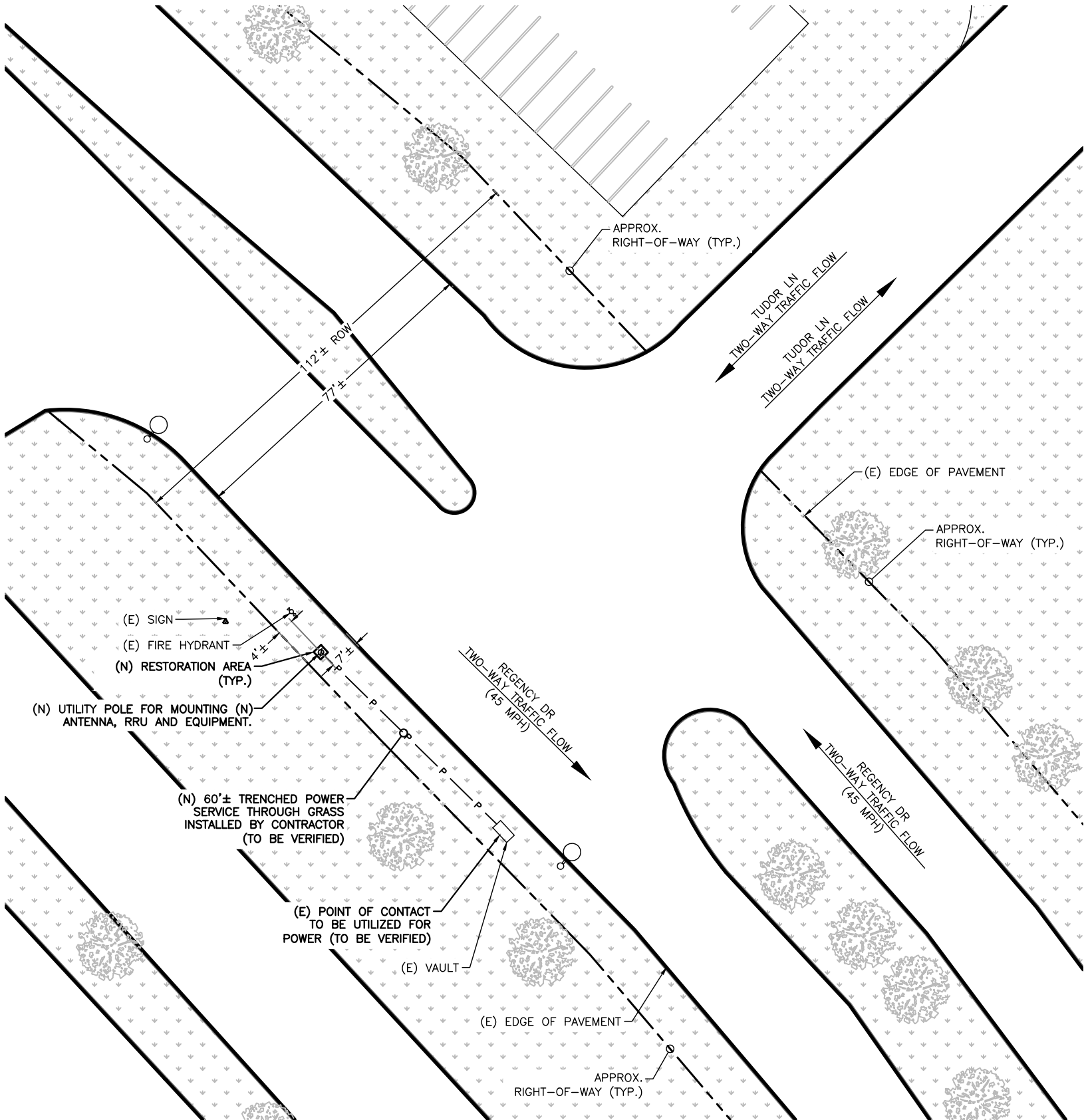
SITE LOCATION

POC LOCATION

AERIAL SITE LOCATION

SCALE: NOT TO SCALE

2



NOTE:
THIS SITE PLAN WAS GENERATED WITHOUT THE USE OF A SURVEY. PROPERTY LINES, RIGHT-OF-WAYS, POWER & TELCO UTILITY POINT CONNECTIONS/ROUTES AND EASEMENTS SHOWN ON THESE PLANS ARE ESTIMATED. ALL ITEMS AND DIMENSIONS SHOULD BE VERIFIED IN THE FIELD.



ENLARGED SITE PLAN

SCALE: 1" = 30'-0" (1" = 15'-0" ON 24"x36" SHEET)

3

mobilitie
intelligent infrastructure

3475 PIEDMONT ROAD NE
SUITE 1000
ATLANTA, GEORGIA 30305
PHONE: (312) 638-5400

RE-17-0007

PROJECT NO: 9NCB002121B
DRAWN BY: GTG
CHECKED BY: RAJ/GTG

PRELIM - NOT FOR CONSTRUCTION

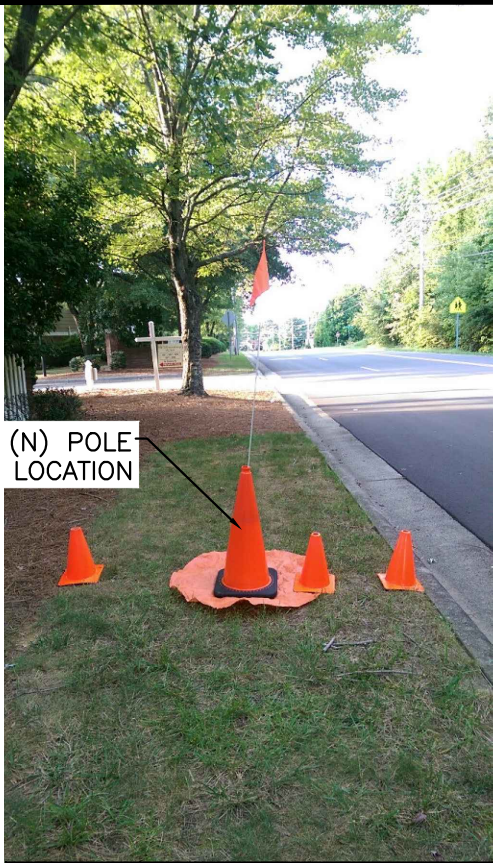
B	06/26/17	HEIGHT REVISION
A	03/14/17	LAND PERMIT

IT IS A VIOLATION OF THE LAW FOR ANY PERSON, UNLESS THEY ARE ACTING UNDER THE DIRECTION OF A LICENSED PROFESSIONAL ENGINEER, TO ALTER THIS DOCUMENT

GB90XS528B
9NCB002121B
REGENCY DR. & TUDOR LN
GREENSBORO, NC 27410
UTILITY POLE

SHEET TITLE
EXHIBIT PHOTO & SITE PLAN

SHEET NUMBER
SP-1

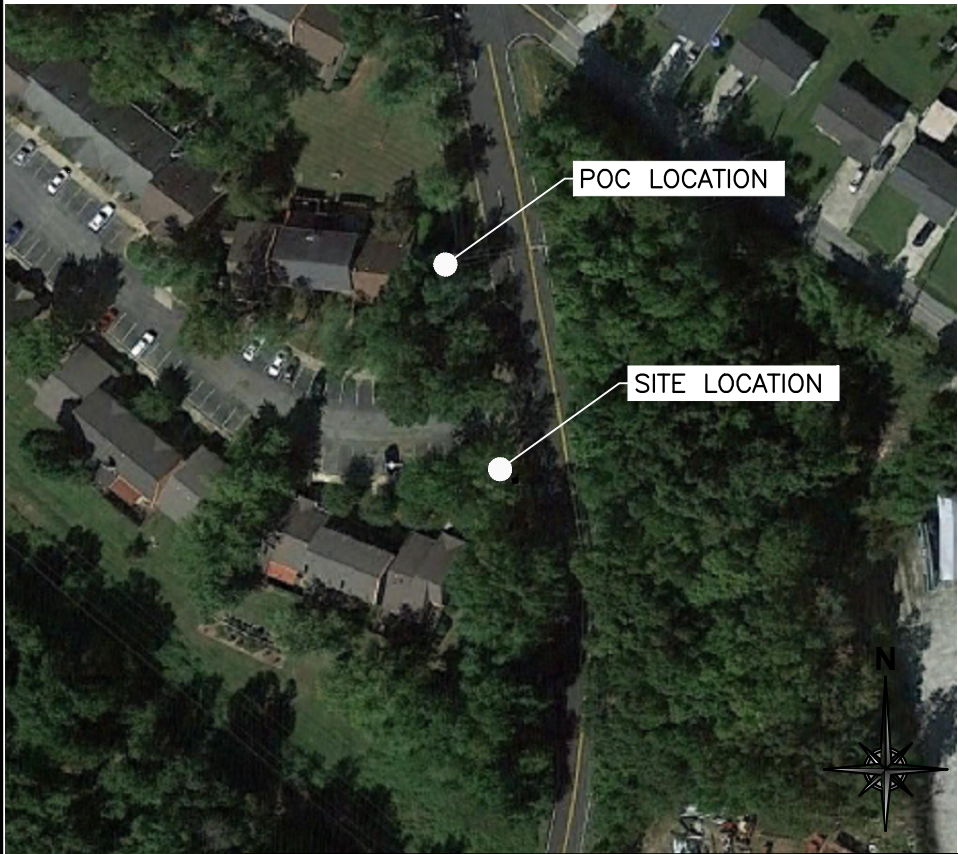


(N) POLE
LOCATION

EXHIBIT PHOTO

SCALE: NOT TO SCALE

1



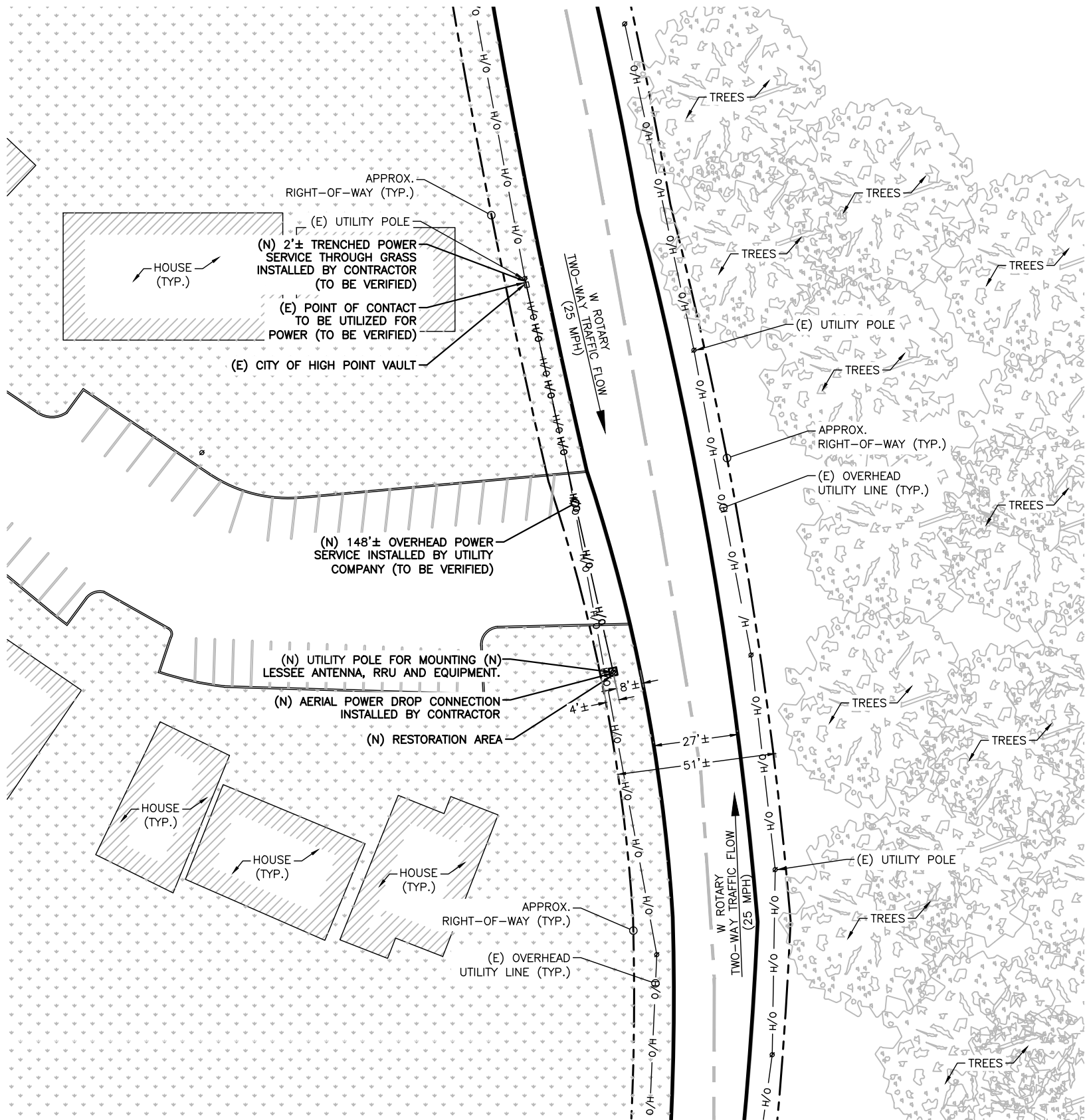
POC LOCATION

SITE LOCATION

AERIAL SITE LOCATION

SCALE: NOT TO SCALE

2



NOTE:
THIS SITE PLAN WAS GENERATED WITHOUT THE USE OF A SURVEY. PROPERTY LINES, RIGHT-OF-WAYS, POWER & TELCO UTILITY POINT CONNECTIONS/ROUTES AND EASEMENTS SHOWN ON THESE PLANS ARE ESTIMATED. ALL ITEMS AND DIMENSIONS SHOULD BE VERIFIED IN THE FIELD.



ENLARGED SITE PLAN

SCALE: 1" = 40'-0" (1" = 20'-0" ON 24"x36" SHEET)

3

mobilitie
intelligent infrastructure

3475 PIEDMONT ROAD NE
SUITE 1000
ATLANTA, GEORGIA 30305
PHONE: (312) 638-5400

RE-17-0008

PROJECT NO: 9NCB002080A
DRAWN BY: GTG
CHECKED BY: RAJ/GTG

PRELIM - NOT FOR CONSTRUCTION

B	06/26/17	HEIGHT REVISION
A	03/14/17	LAND PERMIT USE

IT IS A VIOLATION OF THE LAW FOR ANY PERSON, UNLESS THEY ARE ACTING UNDER THE DIRECTION OF A LICENSED PROFESSIONAL ENGINEER, TO ALTER THIS DOCUMENT

GB90XS487A
9NCB002080A
W ROTARY DR. & NW POINT AVE.
HIGH POINT, NC 27262
UTILITY POLE

SHEET TITLE
EXHIBIT PHOTO & SITE PLAN

SHEET NUMBER
SP-1

RE-17-0008

PROJECT NO: 9NCB002080A
DRAWN BY: GTG
CHECKED BY: RAJ/GTG

PRELIM - NOT FOR CONSTRUCTION

B	06/26/17	HEIGHT REVISION
A	03/14/17	LAND PERMIT USE

IT IS A VIOLATION OF THE LAW FOR ANY
PERSON, UNLESS THEY ARE ACTING UNDER THE
DIRECTION OF A LICENSED PROFESSIONAL
ENGINEER, TO ALTER THIS DOCUMENT

GB90XS487A
9NCB002080A
W ROTARY DR. & NW POINT AVE.
HIGH POINT, NC 27262
UTILITY POLE

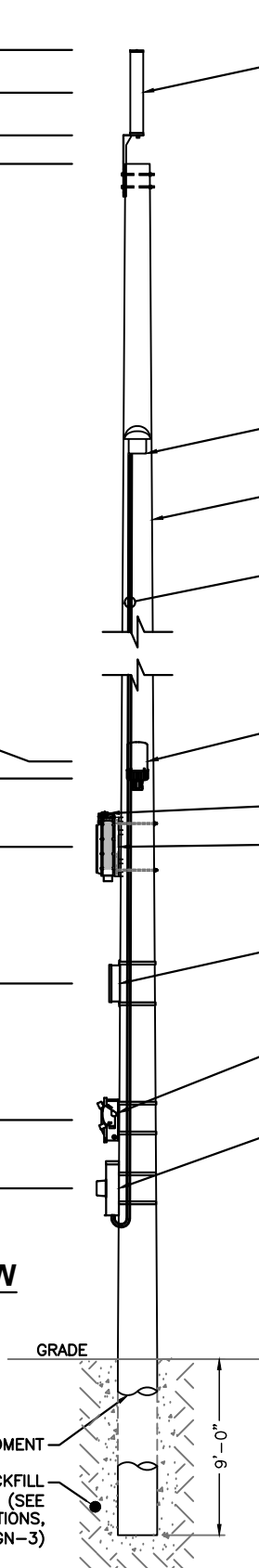
SHEET TITLE
POLE ELEVATIONS

SHEET NUMBER
EV-1

T/ OF (N) ANTENNA = $\pm 39'-4"$
CL OF (N) ANTENNA = $\pm 38'-1"$
B/ OF (N) ANTENNA = $\pm 36'-10"$
T/ OF (N) POLE = $\pm 36'-0"$

CL OF (N) UE RELAY = $\pm 17'-6"$
B/ OF (N) UE RELAY = $\pm 17'-0"$
CL OF (N) RADIO HEAD = $\pm 15'-0"$
CL OF (N) AC DISTRIBUTION BOX = $\pm 11'-0"$
CL OF (N) DISCONNECT = $\pm 7'-0"$
CL OF (N) METER = $\pm 5'-0"$

SIDE VIEW



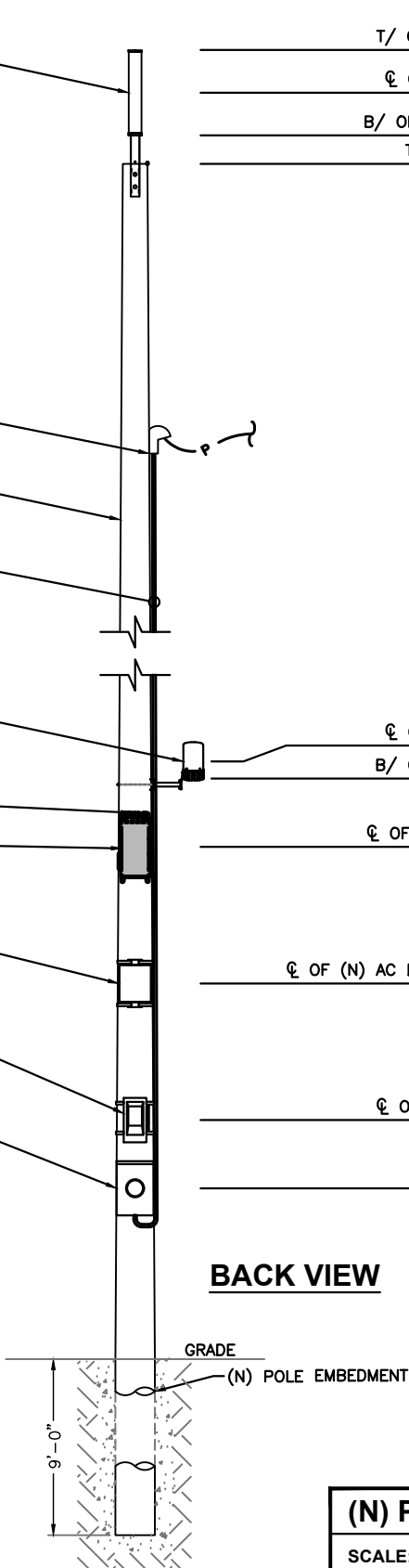
NOTES:

1. ALL HARDWARE SHALL BE STAINLESS STEEL.
2. ALL CABLES SHALL BE SECURED TO POLE EVERY 36\"/>
3. LIGHTNING RODS SHALL BE INCLUDED AS REQUIRED.

T/ OF (N) ANTENNA = $\pm 39'-4"$
CL OF (N) ANTENNA = $\pm 38'-1"$
B/ OF (N) ANTENNA = $\pm 36'-10"$
T/ OF (N) POLE = $\pm 36'-0"$

CL OF (N) UE RELAY = $\pm 17'-6"$
B/ OF (N) UE RELAY = $\pm 17'-0"$
CL OF (N) RADIO HEAD = $\pm 15'-0"$
CL OF (N) AC DISTRIBUTION BOX = $\pm 11'-0"$
CL OF (N) DISCONNECT = $\pm 7'-0"$
CL OF (N) METER = $\pm 5'-0"$

BACK VIEW



(N) POLE ELEVATIONS

SCALE: 1" = 5'

1

NOTE:
REFER TO STRUCTURAL ANALYSIS REPORT
(SEPARATE DOCUMENT) FOR ADDITIONAL
STRUCTURAL INFORMATION.

CONTRACTOR TO BACKFILL
PER REQUIREMENTS (SEE
NOTE 2, FOUNDATIONS,
GN-3)