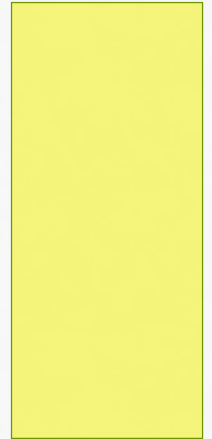


# PUBLIC SERVICES DEPARTMENT

## SOLID WASTE DIVISIONS

ROBBY STONE

ASSISTANT PUBLIC  
SERVICES DIRECTOR



# PUBLIC SERVICES DEPARTMENT SOLID WASTE DIVISIONS



**Environmental Services (circa 1920)**



**Material Recovery Facility (1990)**



**Kersey Valley Landfill (1993)**



**Ingleside Compost Facility (1993)**

# ENVIRONMENTAL SERVICES

## Daily Operations Consists of:

- 13 Automated routes
  - (4 backup automated trucks)
- 3 Yard waste routes
  - (6 backup rear loaders)
- 1 Split route (CBD – daily)
- 2 Special route (alleys, dead animals, etc.)
- 3 Bulk waste routes (1 backup boom truck)
- 2 Front loader multi-family routes (1 backup front loader)
- Servicing 39,000 + residential locations weekly





# ENVIRONMENTAL SERVICES

## Funding History

- General Fund FY 12-13
- Began transitioning to Enterprise Fund in FY 13-14
  - (\$5 Solid Waste Availability Fee)
- Year 2 transition (FY 14-15)
  - Increased solid waste availability fee to \$8
- Year 3 transition (FY 15-16)
  - Increased solid waste availability fee to \$11
- FY 16-17 (Complete transition)
  - Increase solid waste availability fee to \$14
  - Environmental Services fully self funded

# ENVIRONMENTAL SERVICES

## Funding Comparison Monthly Cost

City of HP	North Davidson	Republic	Waste Management
Garbage, recycling, yard waste, bulk waste, medical waste, Furniture Market, dead animal pickup, illegal dumping cleanup	Garbage & recycling	Garbage & recycling	Garbage & recycling
\$14	\$20	\$18.50	\$19.95 - \$27.85

# ANNUAL STREET CLEANUPS

## Keep High Point Beautiful, Inc. operates under Public Services

- 20 member board representing businesses/organizations in High Point.
- Hosts 4 annual cleanups with hundreds of volunteers:
  - The Big Sweep in the Fall
  - The Great American Cleanup in the Spring
  - Summer Trash Smash
  - Winter Wipeout
- #TrashFreeHP
- KHPB Board and the City are working together to expand their presence with two main goals for this year:
  - Outreach to additional neighborhood associations
  - Increase the number of volunteers from 2,000 to 4,000 annually



# CLEAN AND GREEN 2017

## Results and Attendance:

679 Vehicles	
Pesticides	575 pounds
Batteries	1.6 (55 gallon drums)
Paints/Solvents	18,000 gallons
Household Cleaners	420 gallons
Propane Cylinders	72 each
Fluorescent Bulbs	500 pounds
Tires	7.75 tons
Appliances/Scrap Metal	2.77 tons
Electronics	36,631 pounds
Shredded Paper	5.16 tons

# HOUSEHOLD HAZARDOUS WASTE COLLECTION (ONGOING)

**New in Spring 2018!!!**

High Point Residents can drop off: **1401 East Martin Luther King Jr. Drive**

- Household hazardous waste
- Electronics
- Tires

Future expansion of this program will be considered to include other hard to recycle materials.





# ENVIRONMENTAL SERVICES

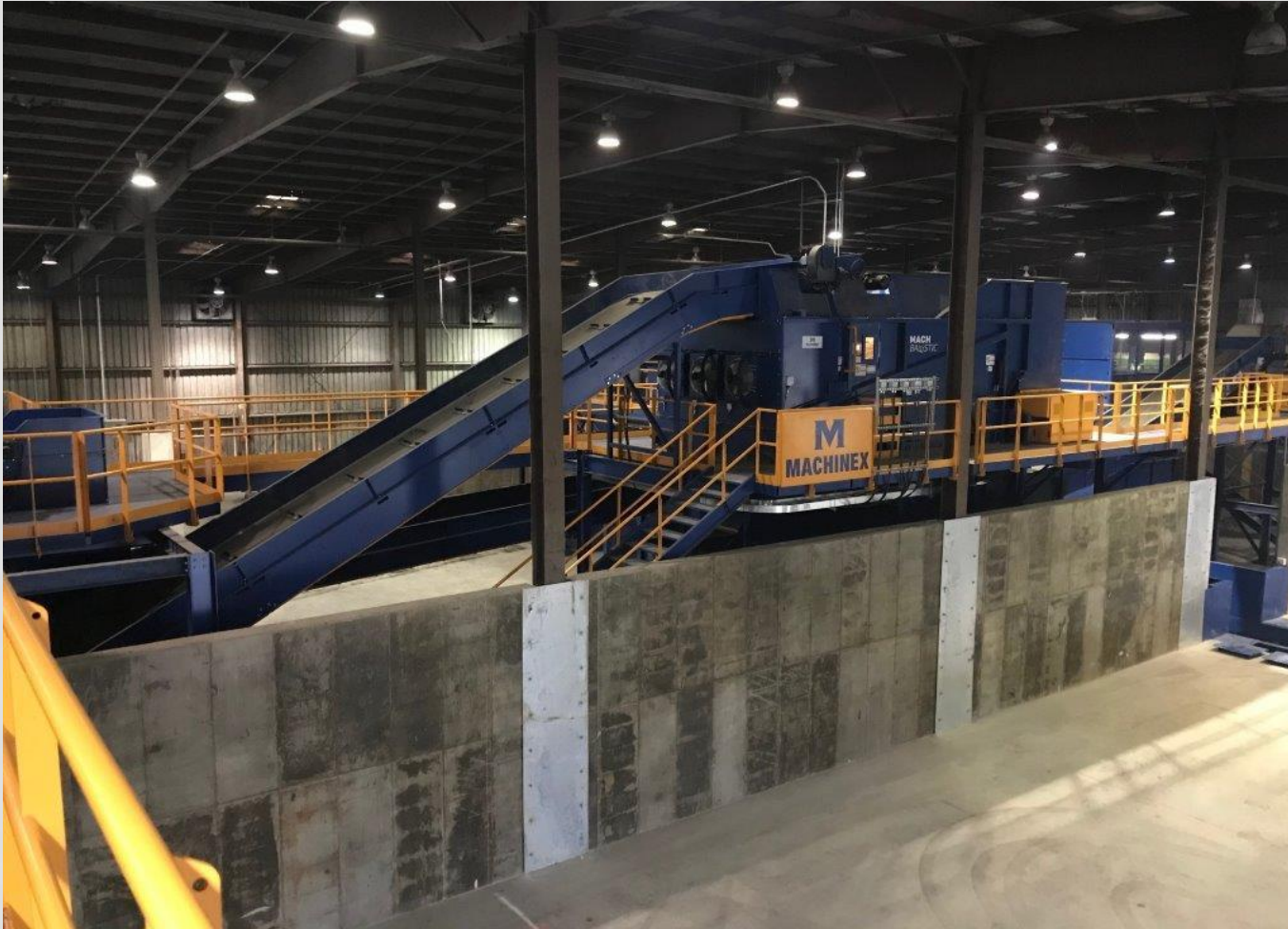
- Possible commercial expansion
  - Expanded dumpster collection to include private schools and non-profit entities
- Community clean-up efforts
- Ongoing HHW collection
- Improved electronics collection
- Continued cart replacements



# ENVIRONMENTAL SERVICES COMMENTS YOU MAY HEAR

- Customer states that garbage or recycling was not picked up.
- Customer states that can was knocked over by worker.
- Whole house clean outs.
- Customer states that worker broke cart.
- Carts left at the curb beyond the day of collection.

# MATERIAL RECOVERY FACILITY



Phase 2 of 3

# WHY WE HAVE A MRF

- Recycling: mandated per state government
- Protect our natural resources
- More reliable long term service
- Make recycling easy for citizens
- Accept e-waste, medical waste, and other non-typical recyclable materials

# CITY OF HIGH POINT MRF





# CITY OF HIGH POINT MRF





# CITY OF HIGH POINT MRF



# MRF

## COMMENTS YOU MAY HEAR

- Processed over 11,000 tons last year
- Accept plastics, glass containers, mixed paper, cardboard, pizza boxes, aluminum, and steel cans
- Furniture Market and Showcase event Services:
  - Semi-annual Furniture Market Largest events held in October and April
  - Creates 10 weeks of increased activity
- Why don't you pick up my television

# INGLESIDE COMPOST FACILITY (ICF)

- E-waste & recycling drop-off location
- Selling of processed materials
- Avg. 13,000 tons of materials/year
- City Policy
  - Residential – personal (free)
  - Commercial – non-HP residents (\$36/ton)





# INGLESIDE COMPOST FACILITY

## COMMENTS YOU MAY HEAR

- Customer does not want to pay to drop off material.
- Customer hires contractor to haul debris to ICF.
- Customer has multiple rental properties and frequents the facility regularly in a work vehicle with their workers and does not want to pay.
- Customer want staff to help them unload their debris.



# KERSEY VALLEY LANDFILL

## Daily Operations Consists

- Municipal solid waste
  - Average 400 + tons / day
- Serves all High Point residents, businesses and others choosing to utilize the facility
- Serviceable Life ~ 2035 (at ~ 400 tons / day) with planned expansion



# KERSEY VALLEY LANDFILL

## MSW Fee Comparison:

- Winston-Salem - \$36/ton
- **City of High Point - \$38/ton**
- Rockingham Co. - \$38/ton
- Alamance Co. - \$38/ton
- Cumberland Co. - \$40/ton
- City of Greensboro - \$44/ton
- Onslow Co. - \$49/ton
- Brunswick Co. - \$59/ton
- Macon Co. - \$66/ton

# KERSEY VALLEY LANDFILL



# KERSEY VALLEY LANDFILL

- Cost Recovery

- No fee increases in the past 10 + years
- City customers pay \$5/mo. closure/post closure fee
- Other municipalities & non-High Point residents bring solid waste to our landfill but do not pay closure/post closure fees. We plan to recommend adjusting our disposal fee with the new budget.

# KERSEY VALLEY LANDFILL COMMENTS YOU MAY HEAR

- All customers pay.
- Free dirt disposal.
- Banning of illegal items (chemicals, drums, electronics)



# QUESTIONS

Thank You for Your Time  
and Continued Support