

PUBLIC SERVICES DEPARTMENT

Street Maintenance Division

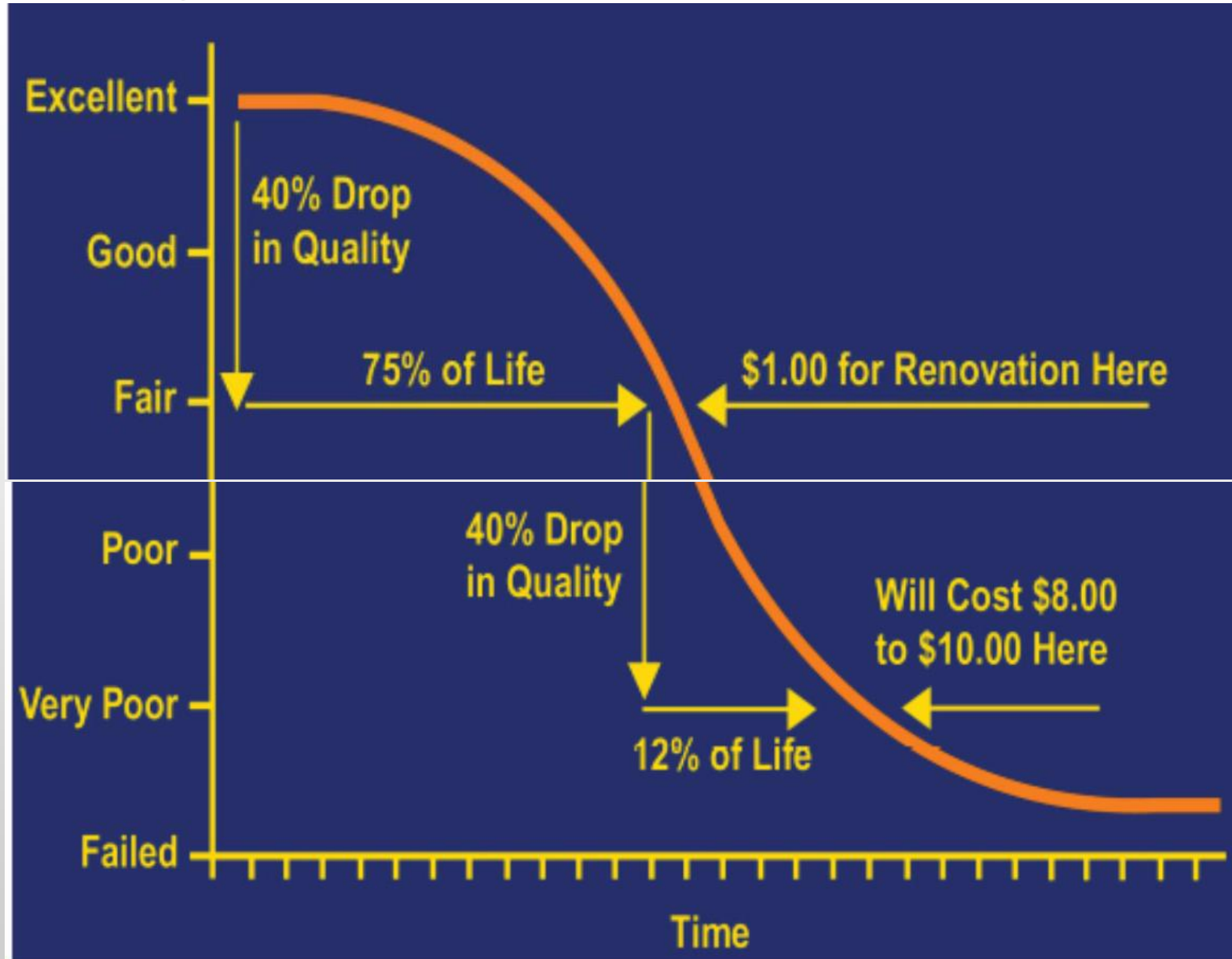
ROBBY STONE

Assistant Public Services Director

What do we do?

- Resurfacing
- Pothole repair and other roadway patches/maintenance
- Concrete repairs for sidewalks and curb/gutters
- Mowing
- Leaf Collection
- Snow & Ice removal
- Bridge repairs
- Tree and Stump removal
- Guardrail maintenance

Increasing Repair Cost as a Function of Pavement Deterioration



Source: Kercher Engineering, Inc.

2017 Pavement Condition Rating Survey



Alligator Cracking
(Mint Ave.)



Reflective Cracking
(Woodbrook Drive)

- A Pavement Condition Rating (PCR) survey is completed **every 3 years** on all City maintained roads
- The last PCR was completed in 2014 by U. S. Infrastructure
- 2017 PCR draft was delivered earlier this month

Findings

- High Point Average PCR = 65.9
- NC Municipality Benchmark Average PCR = 80.0
- High Point Street System is in “Fair” condition

2017 Pavement Condition Survey

Recommendations

High Point should perform stop-gap activities to maintain PCR with no funding changes. Increased funding could allow for other preventative maintenance activities and major rehab. This practice will maintain the PCR rating for the next 5 years

State Benchmark: 15 year paving cycle (for high volume streets)

- 29.5 centerline miles annually (65 lane miles annually)
- \$4.92 M per year (at today's prices)
- (Resurfacing Cycle for High Volume = 15 years & Low Volume = 25 years)

FY 2017 Funding

Powell Bill Funds Received (2017) \$2,914,606

- Contracted resurfacing/maint. Allocation \$2,433,542

- (~23.4 lane miles)

- Debt Service Payment \$ 883,819

Resurfacing by City Forces (2017) \$ 531,074 (G.F.)

- Street Miles (~ 9.0 lane miles)

- Utility Cuts (324)

- Pothole Repairs (1,338)

- Skin Patches (150)

- Base Repair (786 S.Y.)

over and above Powell Bill funding

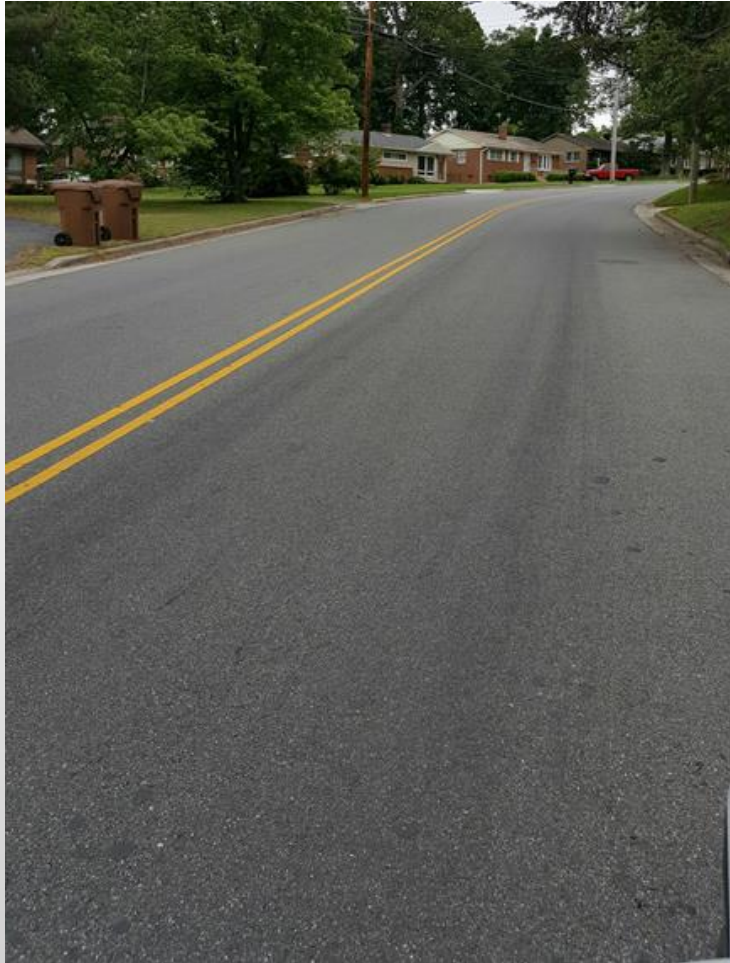
Funding History

Year	Street Miles	Actual Paving \$
2009	433.08	\$389,917
2010	433.23	\$81,586
2011	433.31	\$123,590
2012	435.82	\$0
2013	440.03	\$1,752,695
2014	443.08	\$1,281,546
2015	446.54	\$648,975
2016	446.96	\$2,412,860
2017	447.91	\$2,110,981

CHP Street PCR

PCR Range	Total	Percentage
	Lane Mi.	Lane Mi.
> 85	88.55	19.69%
71 - 85	110.88	24.66%
56 - 70	107.6	23.93%
41 - 55	78.23	17.40%
26 - 40	54.04	12.02%
11 - 25	9.85	2.19%
0 - 10	0.46	0.10%
Total	449.61	100.00%

PCR Street Examples



Guyer b/w Chatham & Lexington
PCR = 98



Woodbrook b/w Hillcrest & Forest Hill
PCR = 55

PCR Street Examples



Edgedale b/w Rotary & Woodbrook
PCR = 58



Mint b/w 4th & Hobson
PCR = 51

Future Funding Needs

2017 Current PCR = 65.9 \$2,450,000/year

- (over 5 year period, PCR average would decrease to 63.3)

Streets Division

Comments you may hear

1. When will my leaves be collected?
2. I saw a leaf/snow plow truck in my area, but they didn't pick up my leaves/plow my road.
3. How do I report a pothole?
4. When will you mow my R/W again?
5. Can you remove a tree, stump or overhanging limbs at my property?

Questions

Thank You for Your Time and
Continued Support