

CITY OF HIGH POINT

AGENDA ITEM



Title: Removal of Sidewalk Trip Hazards

From: Terry Houk – Public Services Director
Robby Stone – Asst. Director Public Services

Meeting Date: May 6, 2019

Public Hearing: N/A

Advertising Date: N/A

Advertised By: N/A

Attachments: Sidewalk Trip Hazard Removal Proposal
Sole Source Form
Sole Source Letter

PURPOSE:

On an annual basis the City budgets for the removal, replacement or an alternative repair method for City of High Point maintained sidewalks. Based on identified needs and available funding, multiple locations of sidewalks have been identified to be repaired.

BACKGROUND:

The City of High Point performs sidewalk replacements or repairs on an annual basis. The list of areas to be repaired was generated from the Street Maintenance Division. The non-intrusive repair method consists of grinding sidewalk trip hazards to bring into ADA compliance. The associated work is anticipated to last up to 10 days. Precision Safe Sidewalks possess a patented technology to perform this work. This technology is less intrusive than digging and replacing while much quicker at a lesser expense.

BUDGET IMPACT:

Funds for the sidewalk repairs are available in the 2018-2019 Annual Budget.

RECOMMENDATION / ACTION REQUESTED:

The Public Services Department recommends approval and requests that City Council award contact to Precision Safe Sidewalks, LLC. in the amount of \$51,962.00.



Before



After

Financial Services
Purchasing Division



Requisition # 22654

CITY OF HIGH POINT
SOLE SOURCE JUSTIFICATION
FORM (For Items Costing \$5000.00 or More)
Statutory Reference N.C.G.S. 143-129(e)6

Vendor: Precision Safe Sidewalks

Item(s): Removal of Sidewalk Trip Hazards

Justification:

Precision Safe Sidewalks, LLC has a perpetual and exclusive license and is the only company in North Carolina authorized to use the patented equipment and method for removing sidewalk trip hazards. This PO will be used to correct trip hazards located in the Heathgate Community. See attached sole source letter.

Estimated expenditure for the above item(s): \$51,962.00

CHECK ALL ENTRIES BELOW THAT APPLY TO THE PROPOSED PURCHASE.
ATTACH A MEMO CONTAINING JUSTIFICATION AND SUPPORT DOCUMENTATION.

1. ☒ Performance or price competition for a product are not available.
2. ☒ A needed product is available from only one source of supply.
3. ☐ Standardization or compatibility is the overriding consideration.
4. ☐ The parts/equipment are required from this source to permit standardization.
5. ☐ None of the above applies. A detailed explanation and justification for this sole source request is contained in attached memo and support documentation.

The undersigned requests that competitive procurement be waived and that the vendor identified as the supplier of the material or service described in this sole source justification be authorized as a sole source for the material or service.

Department Head/Authorized Personnel

Trevor Spencer

Digitally signed by Trevor Spencer
DN: cn=Trevor Spencer, o=City of High Point,
ou=Public Services,
email=trevor.spencer@highpointnc.gov, c=US
Date: 2019.04.17 12:58:07 -0400

Department/Division

PS/Streets

Date 4/17/19

Approval Process

Under \$5,000 (Purchasing Manager)

\$5,000-\$30,000 (Financial Services Director)

\$30,000 – Up (City Council)

Erik Conti

Digitally signed by Erik Conti
Date: 2019.04.18 06:54:24 -04'00'

Bobby Fitzjohn

Digitally signed by Bobby Fitzjohn
DN: cn=Bobby Fitzjohn, o=City of High Point, ou=Financial Services,
email=bobby.fitzjohn@highpointnc.gov, c=US
Date: 2019.04.24 08:53:06 -04'00'

Greg Demko

Digitally signed by Greg Demko
DN: cn=Greg Demko, o=High Point, ou=High Point,
email=greg.demko@highpointnc.gov, c=US
Date: 2019.04.24 08:57:44 -04'00'



Feb 13, 2019

To Whom It May Concern:

Due to the nature of our business, and in lieu of the ability to receive competitive bids, frequently we have been asked to provide a letter stating that our technology relies upon patents that have been issued by the US Patent and Trademark office. These patents enable us and our branch offices to provide the best available trip and fall hazard removal service to our clients.

Precision Safe Sidewalks, LLC has a perpetual and exclusive license and is the only company in Washington DC and the states of North Carolina, Virginia, and West Virginia authorized to use the patented equipment and method for removing sidewalk trip hazards as described by the following patent numbers:

U.S. Pat. No. 7,143,760

U.S. Pat. No. 6,827,074

U.S. Pat. No. 7,000,606

U.S. Pat. No. 6,896,604

U.S. Pat. No. 7,201,644

U.S. Pat. No. 7,402,095

U.S. Pat. No. 9,759,559

Precision Safe Sidewalks LLC is the sole-source provider for this service. If you have any questions or comments please feel free to give me a call.

Regards,

Aaron Ollivier, CEO Precision Concrete Cutting 3191 N. Canyon Rd Provo, Utah 84604 (801) 373-6060

A handwritten signature in black ink, appearing to read "Aaron Ollivier", enclosed within a thin black rectangular border.

Tom Szold, President Precision Safe Sidewalks, LLC 536 Colecroft Court Alexandria, VA 22314 (202) 779-1040

A handwritten signature in black ink, appearing to be a stylized "TS" or similar initials, enclosed within a thin black rectangular border.



PSS AH19-36-1

CITY OF HIGH POINT, NC

SIDEWALK TRIP HAZARD REMOVAL SURVEY AND PROPOSAL



February 15, 2019
© 2019 Precision Safe Sidewalks, Inc.

Presented to: Trevor Spencer, PE, Public Services Manager



ESTIMATE: This estimate has been prepared for:

CITY OF HIGH POINT, NC - TRIP & FALL HAZARD REMOVAL

Trevor Spencer, PE | Public Services Manager

816 E Green Drive, High Point, NC 27260
(336) 883-3455 | trevor.spencer@highpointnc.gov

EXECUTIVE SUMMARY:

Using the information provided by Trevor Spencer for High Point, Precision Safe Sidewalks conducted a risk assessment in a project area to identify sidewalk hazards that create trip and fall liabilities. Our assessment, conducted using the specifications of the Americans with Disabilities Act (ADA), revealed **890 trip and fall hazards** as shown in Table 1 below:

TABLE 1: HEATHGATE			
Streets	Estimated Sidewalk Miles	Total Hazards	Ave Hazard
SWANNER CT	0.18	88	11
GEORGETOWN CT	0.36	139	22
BROOKFIELD CT	0.40	132	24
FARNSWORTH CT	0.26	83	16
HEATHCLIFF RD	0.82	274	49
HEATHGATE PT	0.34	130	20
ASCOT CT	0.16	44	10
TOTAL	3.67	890	22
*** Average Hazard Occurrence = 22 Feet ***			

We observed that the sidewalk infrastructure in the assessed area is in generally good structural condition and is an ideal application for our precision-concrete-cutting repair method. Precision Safe Sidewalks proposes to remove all **890 sidewalk trip and fall hazards** in the assessed areas, meeting or exceeding ADA and OSHA requirements, for **\$51,962**. We have also provided the ability to select a subset of the hazards for repair by CLASS and AREA.

Should you request all hazards be repaired, Precision Safe Sidewalks can complete the work in as few as **8 to 10** work days with 3 technicians. While the sidewalk restoration project is underway, we will:

- ✓ keep the sidewalks in service;
- ✓ require no heavy equipment or traffic control;
- ✓ remove all debris and recycle the concrete waste materials;
- ✓ leave the area clean and trip and fall hazard-free.

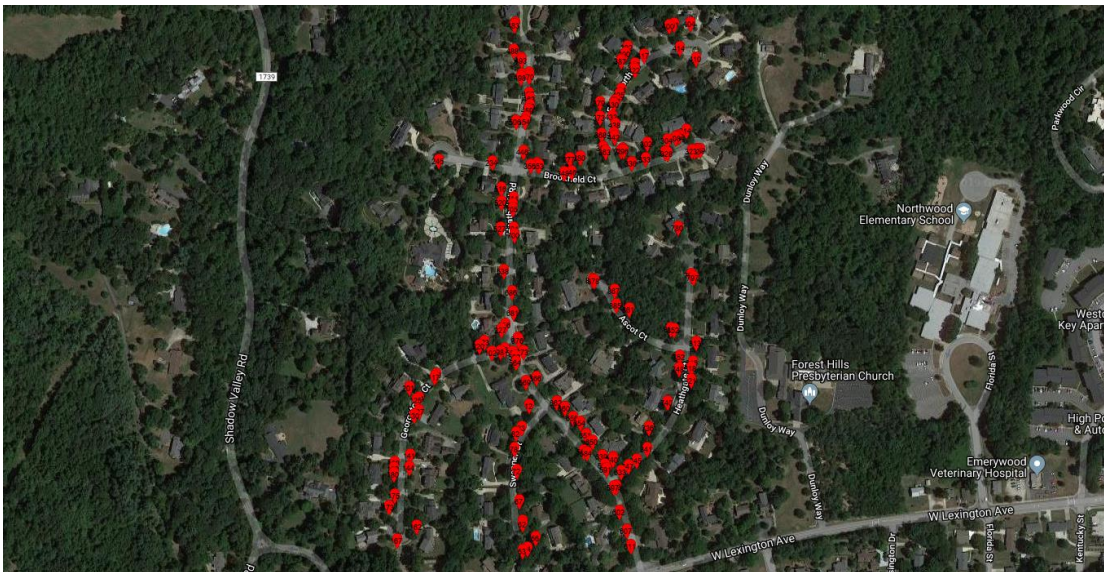
Estimated Savings Summary: We estimate our innovative, patented, precision-concrete-cutting method will save High Point more than **\$79,460** on this project over traditional D&R methods.

We would be happy to discuss any aspect of this proposal and look forward to working with High Point to enhance its sidewalk ADA compliance program, reduce liability for trip and fall incidents, and improve safety of public walkways.

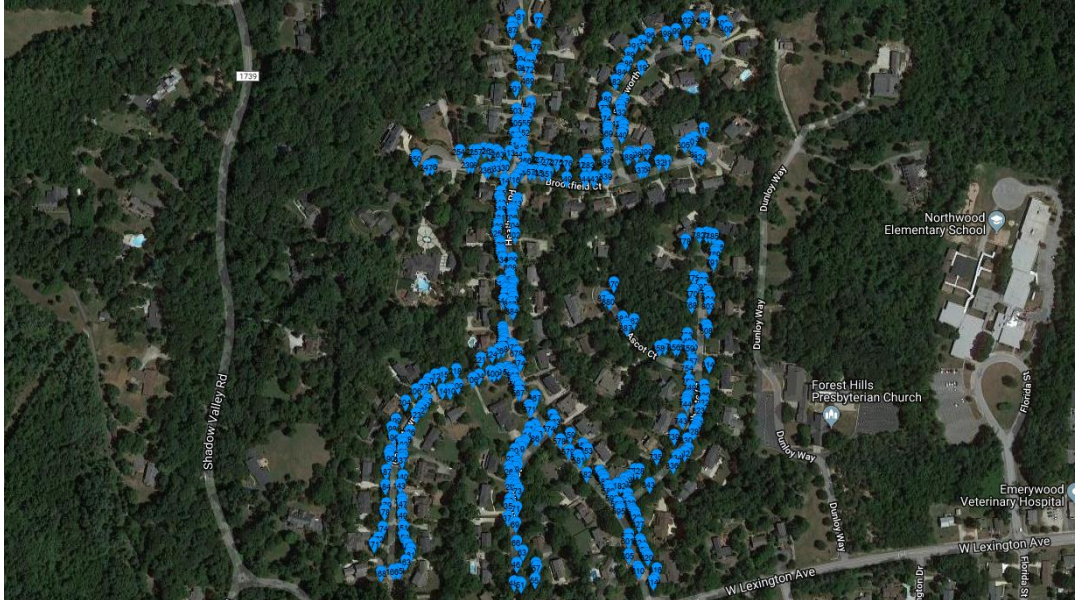
At High Point's request, Precision Safe Sidewalks, LLC. will evaluate additional or alternate locations where our repair services can help stretch funds for sidewalk repairs.

RISK ASSESSMENT HAZARD LOCATIONS

MOST SEVERE HAZARDS (1" TO 2.5")



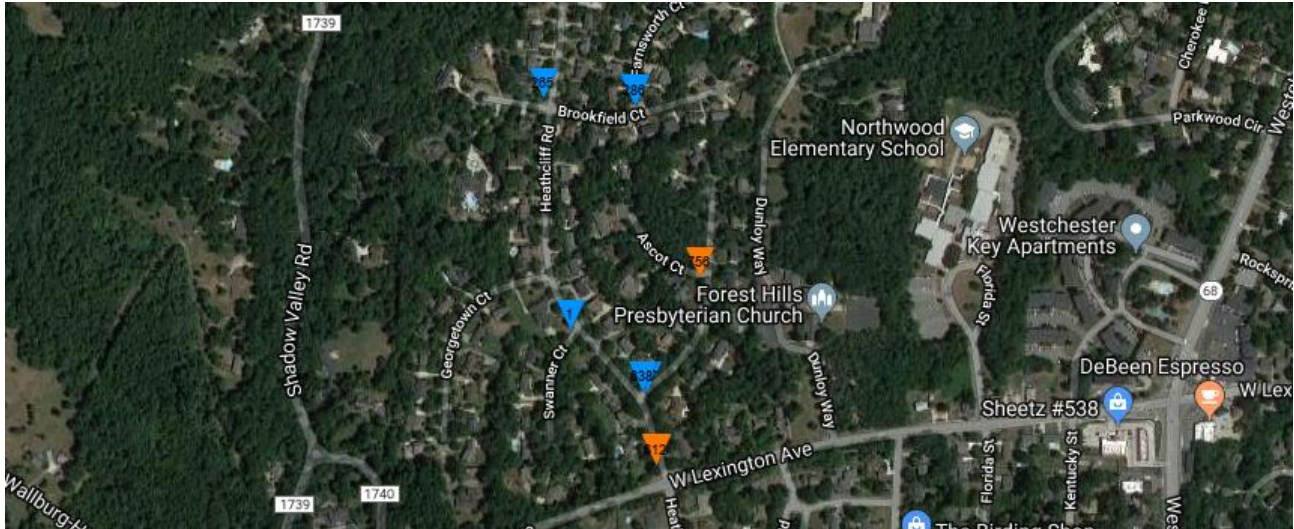
SEVERE HAZARDS (0.5" TO 1")



LEAST SEVERE HAZARDS (0.25" TO 0.50")



SPECIAL CASE HAZARD LOCATIONS (GUTTER PAN = BLUE & BOTTOM HC = ORANGE)



METHODOLOGY -- PREPARING THIS ESTIMATE:

1. A census was conducted of all hazards; the hazards were then grouped into three CLASSES and 7 STREETS:

CLASSES

MOST SEVERE:

SEVERE:

LEAST SEVERE:

SPECIFICATIONS

1 inch to 2½ inches

½ inch to 1 inch

¼ inch to ½ inch

2. An estimate of inch feet for each CLASS was prepared based on our experience data base.
3. A fixed bid was prepared giving the flexibility to choose to repair hazards by CLASS, AREA or all hazards in the proposal.



PRICING OPTION 1: REPAIR SELECTED HAZARDS BY CLASS or AREA

TABLE 2: SIDEWALK TRIP AND FALL HAZARDS						
AREA	STREET		LEAST SEVERE	SEVERE	MOST SEVERE	TOTAL
A	SWANNER CT	Hazards	36	40	12	88
		Cost	\$1,134	\$2,835	\$1,391	\$5,360
B	GEORGETOWN CT	Hazards	40	76	23	139
		Cost	\$1,260	\$5,265	\$2,520	\$9,045
C	BROOKFIELD CT	Hazards	40	65	27	132
		Cost	\$1,260	\$4,793	\$2,835	\$8,887
D	FARNSWORTH CT	Hazards	14	41	28	83
		Cost	\$441	\$2,768	\$2,940	\$6,149
E	HEATHCLIFF RD	Hazards	68	146	60	274
		Cost	\$2,142	\$9,923	\$7,088	\$19,152
F	HEATHGATE PT	Hazards	50	65	15	130
		Cost	\$1,575	\$4,388	\$1,680	\$7,643
G	ASCOT CT	Hazards	24	13	7	44
		Cost	\$756	\$878	\$735	\$2,369
TOTAL ALL AREAS		Hazards	272	446	172	890
		Cost	\$8,568	\$30,848	\$19,189	

You can choose any or all cells for repair in this option. For example, if you choose to repair all the **MOST SEVERE and SEVERE hazards, the price is \$50,036**. If you wanted to repair all trip and fall hazards in **AREA E, HEATHCLIFF RD, the price is \$19,152**. The options to make sidewalk repairs at a slope of 1:10 or 1:12 are available for any pricing option.

PRICING OPTION 2: REPAIR ALL HAZARDS

Precision Safe Sidewalks will remove **all sidewalk and curb hazards in the assessed area** from ¼" to 2½" for a **fixed price of \$51,962**.



SCOPE OF WORK:

The scope of work includes identifying, measuring, recording, marking, and repairing the sidewalk hazards noted in our census at a slope of 1:8 (ramps at 1:12), and removing approximately 938 lbs. of concrete debris from the area. Typically, we recycle this debris.

AVERAGE PRICE PER SQUARE FOOT: \$2.97

There are 17,525 total square feet in the project area. Precision Safe Sidewalks' average price per square foot for the total project is \$2.97 compared to an estimate of \$7.50 per square foot for High Point to demolish and replace it. Estimated D&R costs for High Point include:

- Cost of concrete -- \$100 per cubic yard
- Underground scanning for lines, wires, utilities
- Tree and root removal
- Hydro excavation to remove soil with pressurized water near underground utilities
- Labor and Break up to remove existing concrete
- Labor to Pour, Form, Level, Finish, Float & Cut control joints.
- Fuel for multiple site visits to repair or break-up, remove, pour, remove forms, and restore adjacent items
- Equipment such as a backhoe, vehicle to transport backhoe, utility vehicle, and dump truck to remove debris
- Miscellaneous materials to prepare concrete
- Landscape repair

TABLE 3: COST PER SQUARE FOOT

\$2.97

ESTIMATED SAVINGS: \$79,460

If all the panels were demolished and replaced at a replacement cost of \$7.50 per square foot, we estimate High Point will save more than \$79,460 by using Precision Safe Sidewalks.

REPAIR SCHEDULE & DURATION: 8-10 Days

When scheduled, we estimate the repairs for all hazards on the property will require 8 to 10 work days with the note that wet weather days will delay our operations. We will remove small sections (10' to 15') of sidewalk from service for periods that range from 3 minutes to 45 minutes and will control all traffic around these areas while they are being repaired. No assistance will be required from High Point, although we welcome site visits, evaluations, or inspections at your convenience at any time.

REPAIR SPECIFICATIONS:

Three measurements will be taken of every hazard:

Height¹ -- the highest point of the hazard

Height² -- the lowest point of the hazard

Length

Full Address Location

Hazards will be removed from the full length of the panel (full edge-to-edge repair);

Sidewalks will be repaired at a slope of 1:8, in compliance with ADA requirements;

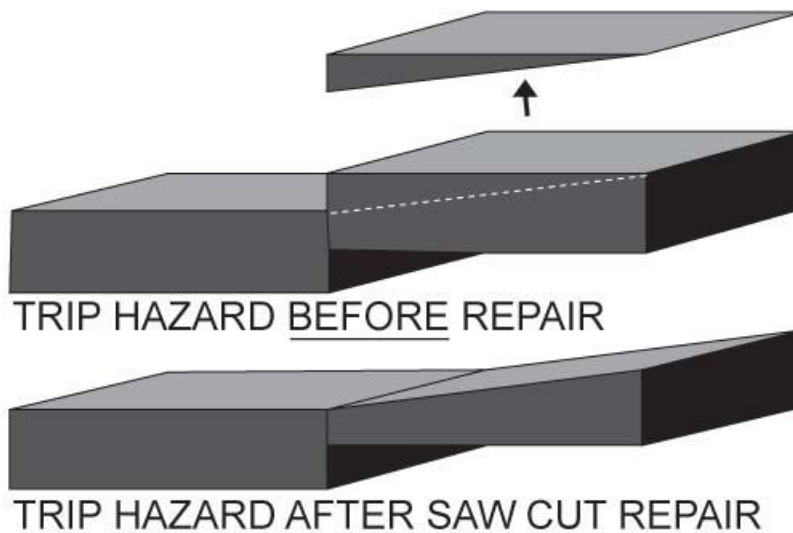
Handicap ramps or special areas will be repaired at a slope of 1:12, in compliance with ADA requirements;

Debris from repaired areas will be collected and removed;

A dust abatement system will be used during all repair operations;

The repaired area will be smooth and uniform with a coefficient of friction exceeding OSHA requirements for public walkways;

A detailed, auditable invoice will be presented for every repair.



WARRANTY:

Precision Safe Sidewalks, LLC. guarantees its work:

1. All trip and fall hazard repairs will have a zero point of differential in height with the adjacent panel.
2. Repairs will affect only the panel causing the hazard; adjacent panels or immovable objects will be unaffected.
3. The slope of all repairs will be in compliance with ADA or precisely at your specification. For this estimate, we have assumed a repair slope of 1:8.
4. The repaired surface will exceed OSHA requirements for friction on public walkways.



RISK ASSESSMENT
CITY OF HIGH POINT, NC
PROPOSAL NUMBER: PSS AH19-36-1

Precision Safe Sidewalks, LLC.
Raleigh NC | Charlotte NC
Mechanicsville VA | Charleston WV
Washington DC
Office/Fax: (800) 734-8891
www.precisionssafesidewalks.com

SAFETY:

Precision Safe Sidewalks, LLC. has a flawless safety record; we use OSHA approved equipment, certify all employees who work directly in trip and fall hazard repair, and have outstanding safety practices for both employees and the public who may be using the walkways we are repairing. We have worked in dense urban, high pedestrian traffic areas, universities as well as residential neighborhoods and historic districts to complete projects without incident. Our clients often receive unsolicited compliments for the work we have performed for them.

INSURANCE and INCORPORATION:

Precision Safe Sidewalks, LLC. is a corporation registered in the state of South Carolina with a Certificate of Authority to operate in North Carolina, Virginia, West Virginia and the District of Columbia. We serve the entire states of North Carolina, Virginia, West Virginia and the District of Columbia. Proof of liability, workers compensation, and auto insurance will be provided as requested.

SOLE SOURCE:

Due to the nature of our business, and in lieu of the ability to receive competitive bids, frequently we have been asked to provide a letter stating that our technology relies upon patents that have been issued by the US Patent and Trademark office. These patents enable us to provide the best available trip and fall hazard removal service to our clients.

Within the states of North Carolina, Virginia, West Virginia and the District of Columbia, Precision Safe Sidewalks, LLC. is the only company authorized to use the patented equipment and method for removing sidewalk trip and fall hazards as described by the following patent numbers:

U.S. Pat. No. 6,827,074
U.S. Pat. No. 7,000,606
U.S. Pat. No. 7,143,760
U.S. Pat. No. 6,896,604
U.S. Pat. No. 7,201,644
U.S. Pat. No. 7,402,095
U.S. Pat. No. 9,759,559

Generally, these patents apply to the cutting equipment, cutting method, and dust abatement system used by Precision Safe Sidewalks, LLC. A sole source letter is available upon request.

US GREEN BUILDING COUNCIL MEMBER

As a member of the Green Building Council, we track savings from the use of our service, which is a green building practice. For this project, we estimate savings will include:



The U.S. Green Building Council (USGBC) is a 501(c)(3) nonprofit membership organization with a vision of a sustainable built environment within a generation. Its membership includes corporations, builders, universities, government agencies, and other nonprofit organizations. USGBC is dedicated to expanding green building practices and education and its LEED® (Leadership in Energy and Environmental Design) Green Building Rating System™.

GREEN PARAMETERS:

Estimated Natural Resources Saved:

- between 386 and 409 tons of waste concrete from removal and landfills (5,841 cubic feet of concrete at an average weight of 132 to 140 lbs per cubic foot)
- approximately same amount of materials and resources to replace the concrete that was removed

Estimated Fossil Fuels Saved: 629 gallons

- hauling equipment to and from the site to remove sidewalks
- operating backhoe equipment to break up and remove concrete
- round trip transportation of 386 to 409 tons of debris to the landfill
- round trip transportation of new materials to replace the removed sidewalks

Estimated Greenhouse Gas Emissions Avoided: 58 Metric Tons CO₂

Our clients often wonder what reducing carbon dioxide (CO₂) emissions from repairing sidewalks means in everyday terms – instead of demolishing and replacing them. We have taken the parameters from your project and used the Greenhouse Gas Equivalencies Calculator (provided by the US Environmental Protection Agency) to help understand just that. For this project, an estimated *58 Metric Tons of CO₂ – Carbon Dioxide or CO₂ equivalent gases will not be produced*: This is the result of repairing the trip and fall hazards on sidewalks versus removing the sidewalk panels and sending them to the landfill.



PICTURES & SPECIAL CASES:

Pictures of MOST SEVERE and SEVERE hazard examples and Special Cases in the project area are included in Exhibit A.

Some sidewalk panels were cracked but serviceable--if the hazard around the crack was repaired; if a panel had 2 or more cracks, no repair work was estimated. Generally, if a panel had one or two cracks and was serviceable, repairs were estimated and included in the totals above. These numbers are small and not significant.

UNREPAIRABLE HAZARDS and FINAL INSPECTION:

A small percentage of trip and fall hazards cannot be repaired using our process. At the completion of work in this project, Precision Safe Sidewalks' inspectors will conduct a final assessment of the project area to compile a census of the locations and size of the areas that will need D&R. The contents of this table include:

- Address
- GPS Location Coordinates
- Square Footage

CONFIDENTIALITY:

This copyrighted material is presented by Precision Safe Sidewalks, LLC. to High Point for the purpose of evaluating an offer to provide trip and fall hazard removal services. These literary, graphic, and pictorial works may not be reproduced or retransmitted in any form and the information presented in this proposal may not be disseminated without express written consent.



RISK ASSESSMENT
CITY OF HIGH POINT, NC
PROPOSAL NUMBER: PSS AH19-36-1

Precision Safe Sidewalks, LLC.
Raleigh NC | Charlotte NC
Mechanicsville VA | Charleston WV
Washington DC
Office/Fax: (800) 734-8891
www.precisionsafesidewalks.com

PROJECT INITIATION:

When advised of acceptance of this proposal, Precision Safe Sidewalks will assign an Operations Manager for the project who will conduct a kick-off meeting with the project manager assigned by High Point. During this meeting, we will discuss:

- Project Strategy and starting location
- Project Schedule and work days
- Special scheduling requests
- Reporting on progress
- General specifications for repairs
- Contact information
- Additional High Point requirements

EXHIBIT A



**MOST SEVERE TRIP AND FALL
HAZARD REPAIRABLE USING
PRECISION CONCRETE CUTTING**



**RECENTLY REPLACED
MOST SEVERE TRIP AND FALL
HAZARD REPAIRABLE USING
PRECISION CONCRETE CUTTING**



**MOST SEVERE TRIP AND FALL
HAZARD REPAIRABLE USING
PRECISION CONCRETE CUTTING**



**MOST SEVERE TRIP AND FALL
HAZARD REPAIRABLE USING
PRECISION CONCRETE CUTTING**





**MOST SEVERE TRIP AND FALL
HAZARD REPAIRABLE USING
PRECISION CONCRETE CUTTING**



**PAINTED
MOST SEVERE TRIP AND FALL
HAZARD REPAIRABLE USING
PRECISION CONCRETE CUTTING**



**MOST SEVERE TRIP AND FALL
HAZARD REPAIRABLE USING
PRECISION CONCRETE CUTTING**



**PARTIALLY REPAIRED WITH
GRINDING MACHINE
MOST SEVERE TRIP AND FALL
HAZARD REPAIRABLE USING
PRECISION CONCRETE CUTTING**



**MOST SEVERE TRIP AND FALL
HAZARD REPAIRABLE USING
PRECISION CONCRETE CUTTING**



**MOST SEVERE TRIP AND FALL
HAZARD REPAIRABLE USING
PRECISION CONCRETE CUTTING**



**RECENTLY REPLACED
MOST SEVERE TRIP AND FALL
HAZARD REPAIRABLE USING
PRECISION CONCRETE CUTTING**



**RECENTLY REPLACED
MOST SEVERE TRIP AND FALL
HAZARD REPAIRABLE USING
PRECISION CONCRETE CUTTING**



**GUTTER PAN / HC RAMP
SEVERE TRIP AND FALL
HAZARD REPAIRABLE USING
PRECISION CONCRETE CUTTING**



**BOTTOM OF HC RAMP
SEVERE TRIP AND FALL
HAZARD REPAIRABLE USING
PRECISION CONCRETE CUTTING**



**GUTTER PAN / HC RAMP
SEVERE TRIP AND FALL
HAZARD REPAIRABLE USING
PRECISION CONCRETE CUTTING**



**CRACK / HC RAMP
SEVERE TRIP AND FALL
HAZARD REPAIRABLE USING
PRECISION CONCRETE CUTTING**



**BOTTOM HC RAMP
MOST SEVERE TRIP AND FALL
HAZARD REPAIRABLE USING
PRECISION CONCRETE CUTTING**



**PARTIALLY REPAIRED WITH
GRINDING MACHINE
SEVERE TRIP AND FALL
HAZARD REPAIRABLE USING
PRECISION CONCRETE CUTTING**

EXHIBIT B

Sidewalk Trip and Fall Hazard Repair Example



Curb Repair Examples



BEFORE
1+ Inch Curb Trip Hazard
Created by a Sunken Panel



AFTER
Curb Trip Hazard Removed
Now Level with Sidewalk Panel





EXHIBIT C

Federal Register / Vol. 56, No. 144 / Friday, July 26, 1991 / Rules and Regulations

Federal Regulations on Trip Hazard Removal

Part III

Department of Justice

Office of the Attorney General

28 CFR Part 36

Nondiscrimination on the Basis of Disability Public Accommodations and in Commercial Facilities; Final rule

4.5 Ground and Floor Surfaces

Excerpts from Federal Register

4.5.2 Changes in Level. Changes in level up to 1/4 in (6 mm) may be vertical and without edge treatment. Changes in level between 1/4 in and 1/2 in (6mm and 13mm) shall be beveled with a slope no greater than 1:2. Changes in level greater than 1/2 in (13 mm) shall be accomplished by means of a ramp that complies with 4.7 or 4.8.

4.7.2 Slope. Slopes of curb ramps shall comply with 4.8.2. Transitions from ramps to walks, gutters, or streets shall be flush and free of abrupt changes. Maximum slopes of adjoining gutters, road surface immediately adjacent to the curb ramp, or accessible route shall not exceed 1:20.

4.8.2 Slope and Rise. The least possible slope shall be used for any ramp. The maximum slope of a ramp in new construction shall be 1:12. The maximum rise for any run shall be 30 in (760 mm). Curb ramps and ramps to be constructed on existing sites or in existing building or facilities may have slopes and rises as allowed in 4.1.6(3)(a) if space limitations prohibit the use of a 1:12 slope or less.

3 – a – 1. A slope between 1:10 and 1:12 is allowed for a maximum rise of 6 inches.

3 – a – 1. A slope between 1:8 and 1:10 is allowed for a maximum rise of 3 inches. A slope steeper than 1:8 is not allowed.



ESTIMATE & PROPOSAL
CITY OF HIGH POINT, NC
PROPOSAL NUMBER: PSS AH19-36-1

Precision Safe Sidewalks, LLC.
Raleigh NC | Charlotte NC
Mechanicsville VA | Charleston WV
Washington DC
Office/Fax: (800) 734-8891
www.precisionsafesidewalks.com

ACCEPTANCE OF PROPOSAL

FAX TO: (800) 734-8891

Or EMAIL TO: a.hester@precisionsafesidewalks.com

SCOPE of PROJECT:

Repair of trip and fall hazards in areas identified in PROPOSAL
NUMBER: PSS AH19-36-1

OPTION/COST:

P. O. NUMBER:

Date:

Name:

APPROVED BY:

Signature:

Title:

Phone:

Email:

NOTES:

Upon receipt of this signed acceptance, Precision Safe Sidewalks, LLC. will schedule the requested repairs. Every effort will be made to accommodate the Requested Start Date.