

CITY OF HIGH POINT

AGENDA ITEM



Title: Godwin 8-inch Dri-Prime CD225M Diesel Pump

From: Terry Houk – Public Services Director
Derrick Boone – Asst. Director Public Services
Greg Hall- W/S Mains Superintendent

Meeting Date: May 4, 2020

Public Hearing: No

Advertising Date: N/A
Advertised By: N/A

Attachments: Attachment A – Quote
Attachment B- Godwin Pump Brochure

PURPOSE:

Sole source approval for purchase of a Godwin 8-inch Dri-Prime CD225M Diesel Pump for the Water and Sewer Mains Division of the Public Services Department.

BACKGROUND:

The Water and Sewer Mains Division has an existing 8-inch Godwin Dri-Prime CD225M Diesel pump that is trailer mounted and used for bypassing sanitary sewer flow. There is a need for a back-up bypass pump due to increased rain events, aging infrastructure and increased monitoring by the State. The Public Services Department is purchasing the Godwin pump as a sole source to standardize with the existing Godwin pump. Xylem is the exclusive sales and service representative for Godwin pumps.

BUDGET IMPACT:

Funds for this project are available in the FY 2019-2020 budget.

RECOMMENDATION / ACTION REQUESTED:

The Public Services Department recommends that Council approve the sole source purchase to Xylem for the 8-inch Godwin Dri-Prime CD225M Diesel Pump for \$55,316.10.



635 Gold Hill Road
Fort Mill, SC 29715
Tel: 803-818-3126
Fax: 803-818-3127
www.godwinpumps.com

April 20, 2020

Mr. Shane Parrish
City of High Point
Finance Dept - Debra
PO Box 230
High Point, NC 27261

Phone: 336-883-3691
Email: shane.parrish@highpointnc.gov

**RE: Godwin CD225M Purchase
Sale Quotation**

Dear Mr. Parrish:

Thank you for considering Xylem for your pumping needs. Following is s sale quotation on our Godwin Dri-Prime CD225M 8" pump. The unit quoted is trailer mounted and powered by a JCB TCAE-93 diesel engine. In addition I have included a PrimeGuard floatset and labor to integrate the pump to your SCADA system.

The hose and accessories are included in a separate quote, as requested. If I can be of further assistance or you have any questions please reach out to me on my cell at 704-221-3737 or my office at 803-818-3126.

Thank you for your business!

Sincerely,

Bob Shinn
Outside Sales Representative

BS / krw

Attachments:
Pump Sale Quotation: 118015922
Accessories Sale Quotation: 118015924

SALE QUOTATION

GSA Contract # GS-07F-102GA
Contract Period: April 15, 2017 through April 14, 2022

ITEM	QTY	DESCRIPTION	UNIT PRICE	SALE TOTAL
A	1	Dri-Prime CD225M Diesel Pump <ul style="list-style-type: none">• 8" 150# Flange Suction and Discharge• JCB TCAE-93 FT4 Diesel Engine• Includes PrimeGuard Engine Controller• Hwy Trailer, Elec Brakes, DOT Lights	\$ 54,826.10	\$ 54,826.10
B	1	DELIVERY MOTOR FRT BR 018 FULL LOAD	490.00	490.00

Our current delivery lead-times associated with this Quotation are best estimates at this time. Due to the outbreak of the COVID-19 virus pandemic and its global effects on commerce, supply chain, and logistics, these lead-times are an estimate only and not a commitment. Xylem is and will continue to use all commercially reasonable efforts to minimize any delivery delay impacts.

NET SALE TOTAL

\$ 55,316.10

Please note all sale pricing is in U.S. Dollars. The price does not include freight, export boxing, duties, taxes, or any other items not specifically mentioned.

This pricing information is for internal use only. We ask that these items and terms be kept confidential. All applicable tax and freight charges will be added to invoices. All quotations are subject to credit approval. All quotations are valid for 30 days. All prices quoted in US dollars.

This order is subject to the Standard Terms and Conditions of Sale - Xylem Americas effective on the date the order is accepted which terms are available at <https://www.xylem.com/en-US/support/xylem-americas-standard-terms-and-conditions/> and incorporated herein by reference and made a part of the agreement between the parties.

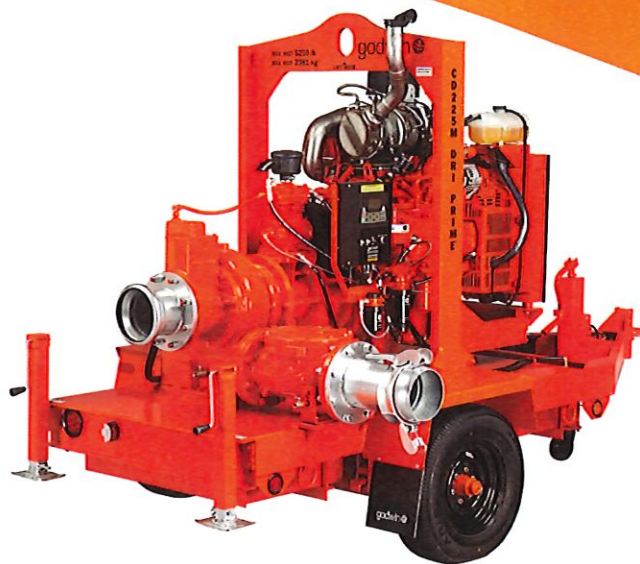
CD225M Dri-Prime® Pump

WITH FINAL TIER 4 (FT4) DIESEL ENGINE

The Godwin Dri-Prime CD225M pump offers flow rates to 3240 USGPM and has the capability of handling solids up to 3.0" in diameter.

The CD225M is able to automatically prime to 28' of suction lift from dry. Automatic or manual starting/stopping available through integral mounted control panel or optional wireless-remote access.

Indefinite dry-running is no problem due to the unique Godwin liquid bath mechanical seal design. Solids handling, dry-running, and portability make the CD225M the perfect choice for dewatering and bypass applications.



Features and Benefits

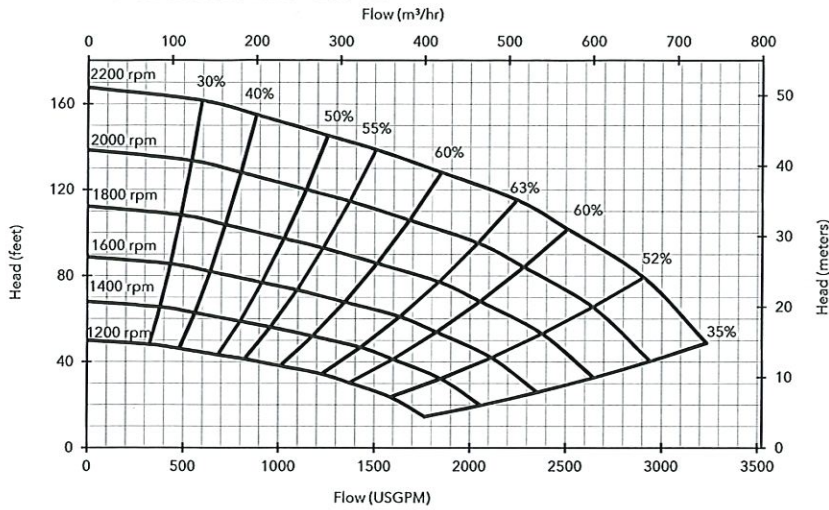
- Simple maintenance normally limited to checking fluid levels and filters.
- Dri-Prime (continuously operated Venturi air ejector priming device) requiring no periodic adjustment. Optional compressor clutch available.
- Extensive application flexibility handling sewage, slurries, and liquids with solids up to 3.0" in diameter.
- Dry-running high pressure liquid bath mechanical seal with high abrasion resistant solid silicon carbide faces.
- Close-coupled centrifugal pump with Dri-Prime system coupled to a diesel engine or electric motor.
- All cast iron construction (stainless steel construction option available) with cast steel impeller.
- Also available in a critically silenced unit which reduces noise levels to less than 70 dBA at 30'.
- Standard engine John Deere 4045HFC04 (FT4). Also available with JCB TCAE-93 (FT4).

Suction connection	8" 150# ANSI B16.5
Delivery connection	8" 150# ANSI B16.5
Max capacity	3240 USGPM †
Max solids handling	3.0"
Max impeller diameter	11.4"
Max operating temp	176°F*
Max working pressure	80 psi
Max suction pressure	73 psi
Max casing pressure	120 psi
Max operating speed	2200 rpm

* Please contact our office for applications in excess of 176°F.

† Larger diameter pipes may be required for maximum flows.

Performance Curve



Engine option 1

John Deere 4045HFC04 (FT4), 99 HP @ 2200 rpm

Impeller diameter 11.4"

Pump speed 2200 rpm

Suction Lift Table

Total Suction Head (feet)	Total Delivery Head (feet)				
	42	70	101	121	137
Output (USGPM)					
10	3148	2906	2325	-	-
15	2906	2543	2058	1695	-
20	1695	1695	1695	1453	-
25	1211	1211	1211	969	387

Fuel capacity: 100 US Gal

Max fuel consumption @ 2200 rpm: 6.4 US Gal/hr

Max fuel consumption @ 1800 rpm: 3.3 US Gal/hr

Weight (Dry): 5,500 lbs

Weight (Wet): 6,220 lbs

Dim.: (L) 155" x (W) 77" x (H) 97"

Performance data provided in tables is based on water tests at sea level and 20°C ambient. All information is approximate and for general guidance only. Please contact the factory or office for further details.

Materials

Pump casing & suction cover	Cast iron BS EN 1561 - 1997
Wearplates	High Chromium Cast Iron HC403:1977
Pump Shaft	Carbon steel BS 970 - 1991 817M40T
Impeller	Cast Steel BS3100 A5 Hardness to 200 HB Brinell
Non-return valve body	Cast iron BS EN 1561 - 1997
Mechanical seal	Silicon carbide face; Viton elastomers; Stainless steel body

Engine option 2

JCB TCAE-93 (FT4), 118 HP @ 2200 rpm

Impeller diameter 11.4"

Pump speed 2200 rpm

Suction Lift Table

Total Suction Head (feet)	Total Delivery Head (feet)				
	42	70	101	121	137
Output (USGPM)					
10	3148	2906	2325	-	-
15	2906	2543	2058	1695	-
20	1695	1695	1695	1453	-
25	1211	1211	1211	969	387

Fuel capacity: 100 US Gal

Max fuel consumption @ 2200 rpm: 6.2 US Gal/hr

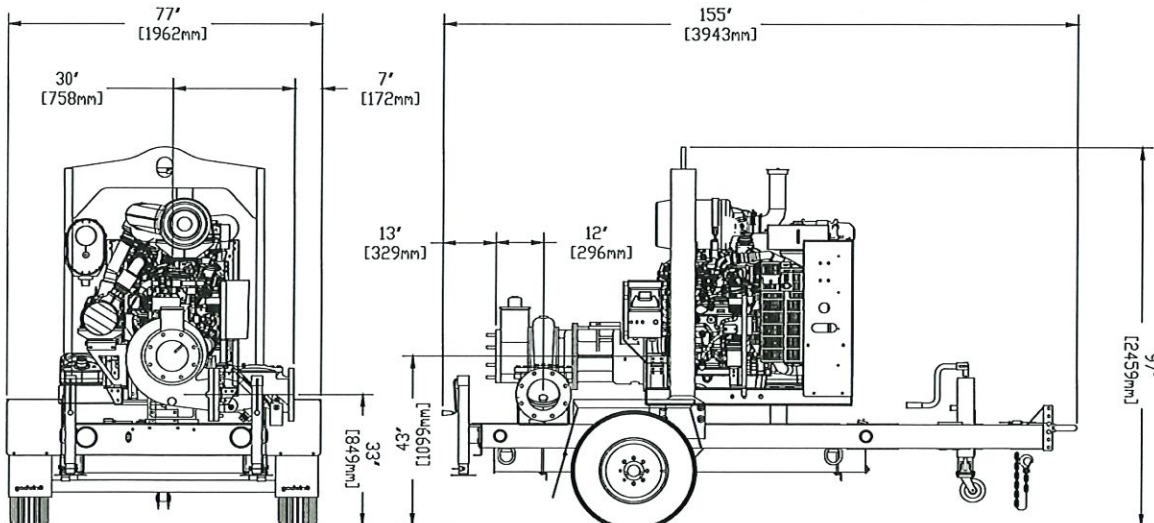
Max fuel consumption @ 1800 rpm: 3.3 US Gal/hr

Weight (Dry): 5,230 lbs

Weight (Wet): 5,950 lbs

Dim.: (L) 155" x (W) 77" x (H) 97"

Performance data provided in tables is based on water tests at sea level and 20°C ambient. All information is approximate and for general guidance only. Please contact the factory or office for further details.



xylem
Let's Solve Water

84 Floodgate Road
Bridgeport, NJ 08014 USA
(856) 467-3636 • Fax (856) 467-4841

Reference number: 200GPA0001000
Date of issue: November 2, 2015
Issue:

www.godwinpumps.com

Financial Services

Purchasing Division



Requisition #

CITY OF HIGH POINT
SOLE SOURCE JUSTIFICATION FORM
(For Items Costing \$10,000.00 or More)
Statutory Reference N.C.G.S. 143-129(e)6

Vendor: **Xylem (formerly Godwin)**

Item(s): **8" trailer mounted pump wit floats, hoses, and controls**

Justification:

We currently have one 8" Godwin (now Xylem) trailer mounted pump for bypassing sewer flow. With sewer lines and lift stations becoming older, rain events becoming more intense, and increased monitoring by the State, there is an increasing likelihood that multiple failures will occur at the same time.

Estimated expenditure for the above item(s): **\$67,869.23**

Accounting Unit and Account(s):

621754 533101

CHECK ALL ENTRIES BELOW THAT APPLY TO THE PROPOSED PURCHASE.
ATTACH A MEMO CONTAINING JUSTIFICATION AND SUPPORT DOCUMENTATION.

1. ☐ Performance or price competition for a product are not available.
2. ☒ A needed product is available from only one source of supply.
3. ☒ Standardization or compatibility is the overriding consideration.
4. ☒ The parts/equipment are required from this source to permit standardization.
5. ☐ None of the above applies. A detailed explanation and justification for this sole source request is contained in attached memo and support documentation.

The undersigned requests that competitive procurement be waived and that the vendor identified as the supplier of the material or service described in this sole source justification be authorized as a sole source for the material or service.

Department Head/Authorized Personnel

Terry Houk

Digitally signed by Terry Houk
Date: 2020.04.20 16:48:44 -04'00'

Department/Division

621754

Date

4/20/20

APPROVAL PROCESS

Purchasing Manager

Erik S. Conti

Digitally signed by Erik S. Conti
Date: 2020.04.20 17:13:07 -04'00'

Financial Services Director

Bobby Fitzjohn

Digitally signed by Bobby Fitzjohn
Date: 2020.04.21 09:48:07 -04'00'

City Council (\$30,000 – Up)

Greg Demko

Digitally signed by Greg Demko
Date: 2020.04.27 10:53:49 -04'00'