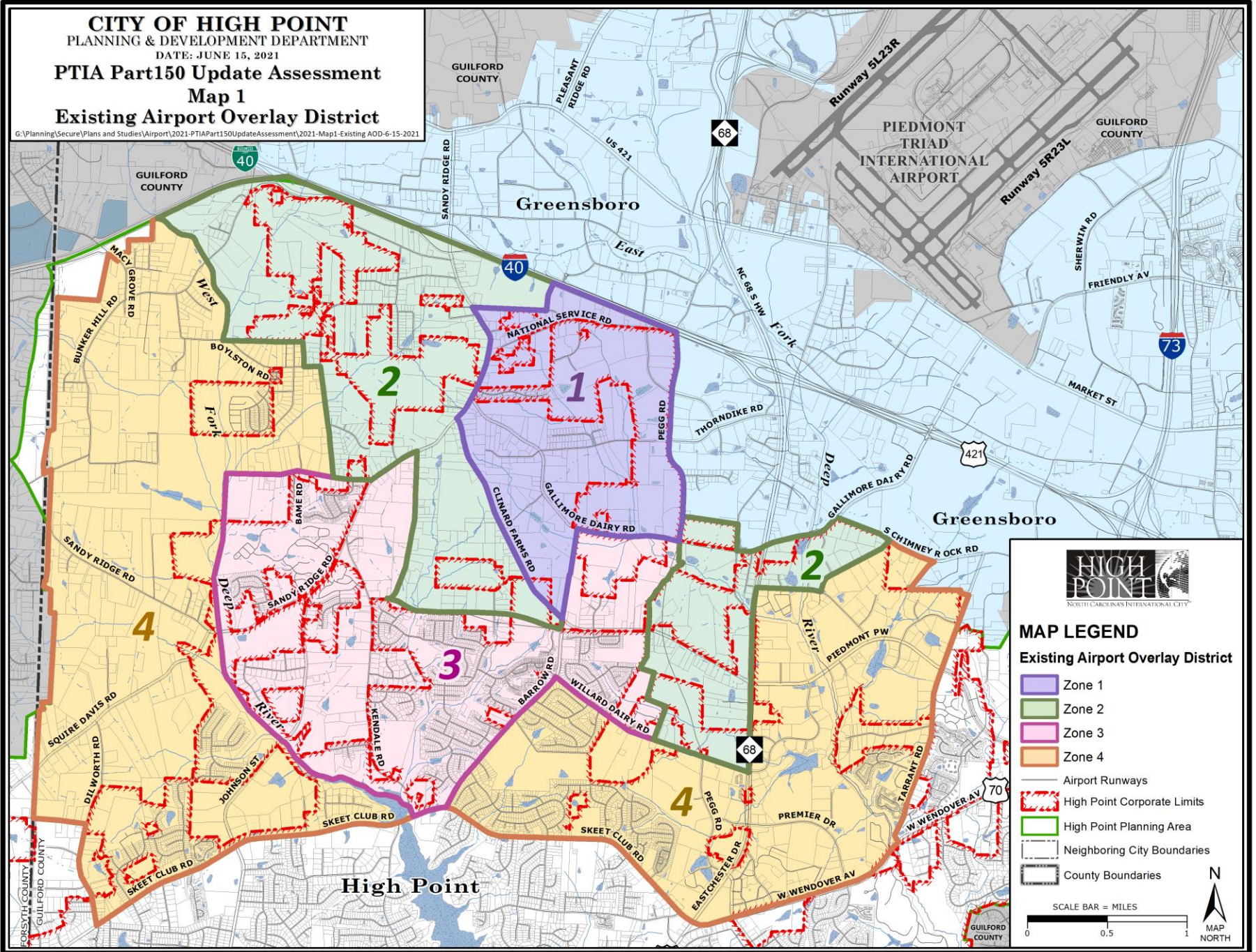


# PTIA PART 150 UPDATE ASSESSMENT

Planning & Development Department  
June 2021

**CITY OF HIGH POINT**  
**PLANNING & DEVELOPMENT DEPARTMENT**  
 DATE: JUNE 15, 2021  
**PTIA Part150 Update Assessment**  
**Map 1**  
**Existing Airport Overlay District**

G:\Planning\Secure\Plans and Studies\Airport\2021-PTIA Part150 Update Assessment\2021-Map1-Existing AOD-6-15-2021



**MAP LEGEND**

**Existing Airport Overlay District**

- Zone 1
- Zone 2
- Zone 3
- Zone 4
- Airport Runways
- High Point Corporate Limits
- High Point Planning Area
- Neighboring City Boundaries
- County Boundaries

SCALE BAR = MILES





JOSEPH M BRYAN BV

GUILFORD COUNTY

Runway 5L23R

Runway 5R23L

GUILFORD COUNTY

MARKET ST

Greensboro

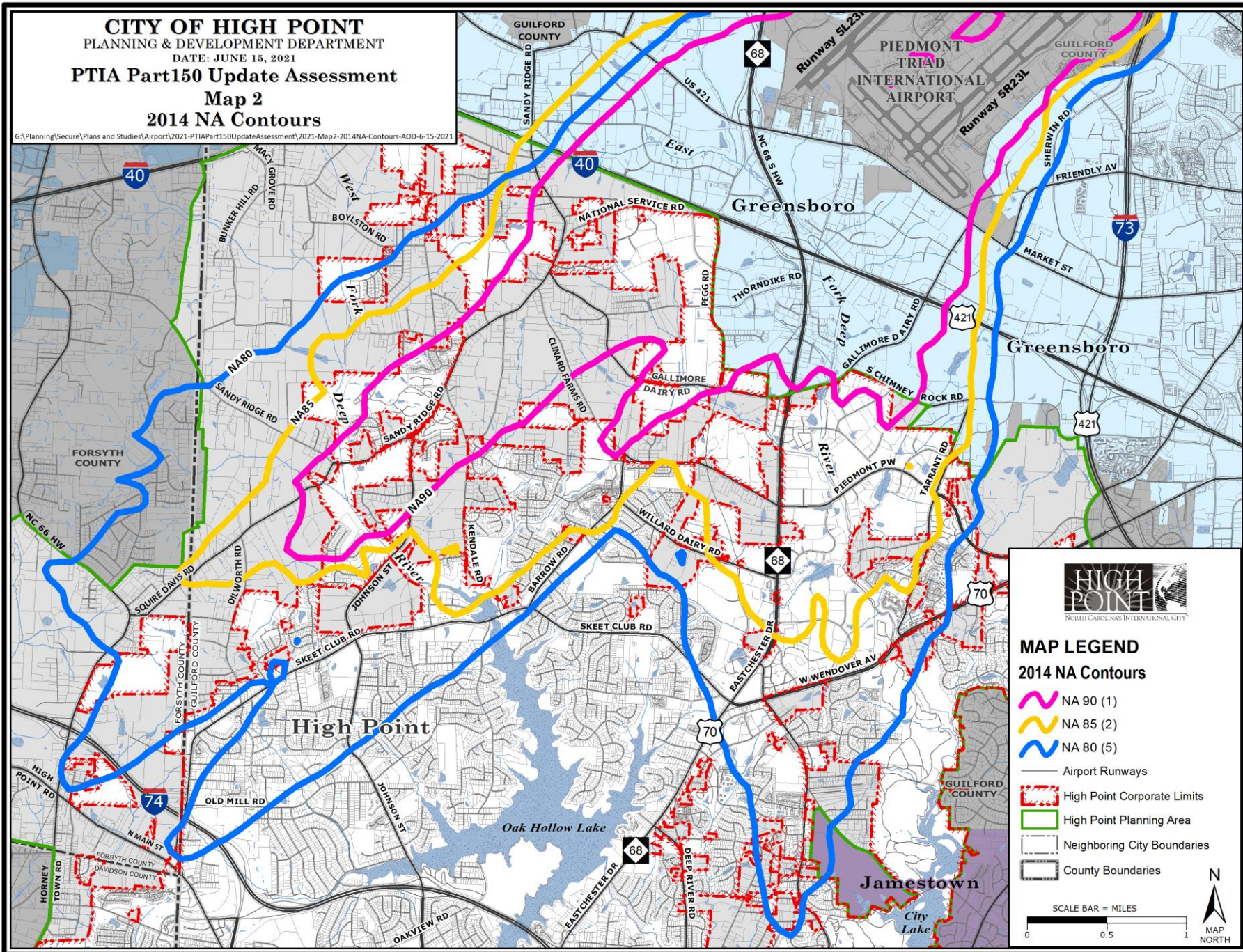
Greensboro

SHERWIN RD

FRIENDLY AV

**CITY OF HIGH POINT**  
 PLANNING & DEVELOPMENT DEPARTMENT  
 DATE: JUNE 18, 2021  
**PTIA Part150 Update Assessment**  
**Map 2**  
**2014 NA Contours**

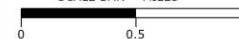
G:\Planning\Secure\Plans and Studies\Airport\2021-PTIA Part150 Update Assessment\2021-Map2-2014NA-Contours-AOD-6-15-2021



**MAP LEGEND**  
**2014 NA Contours**

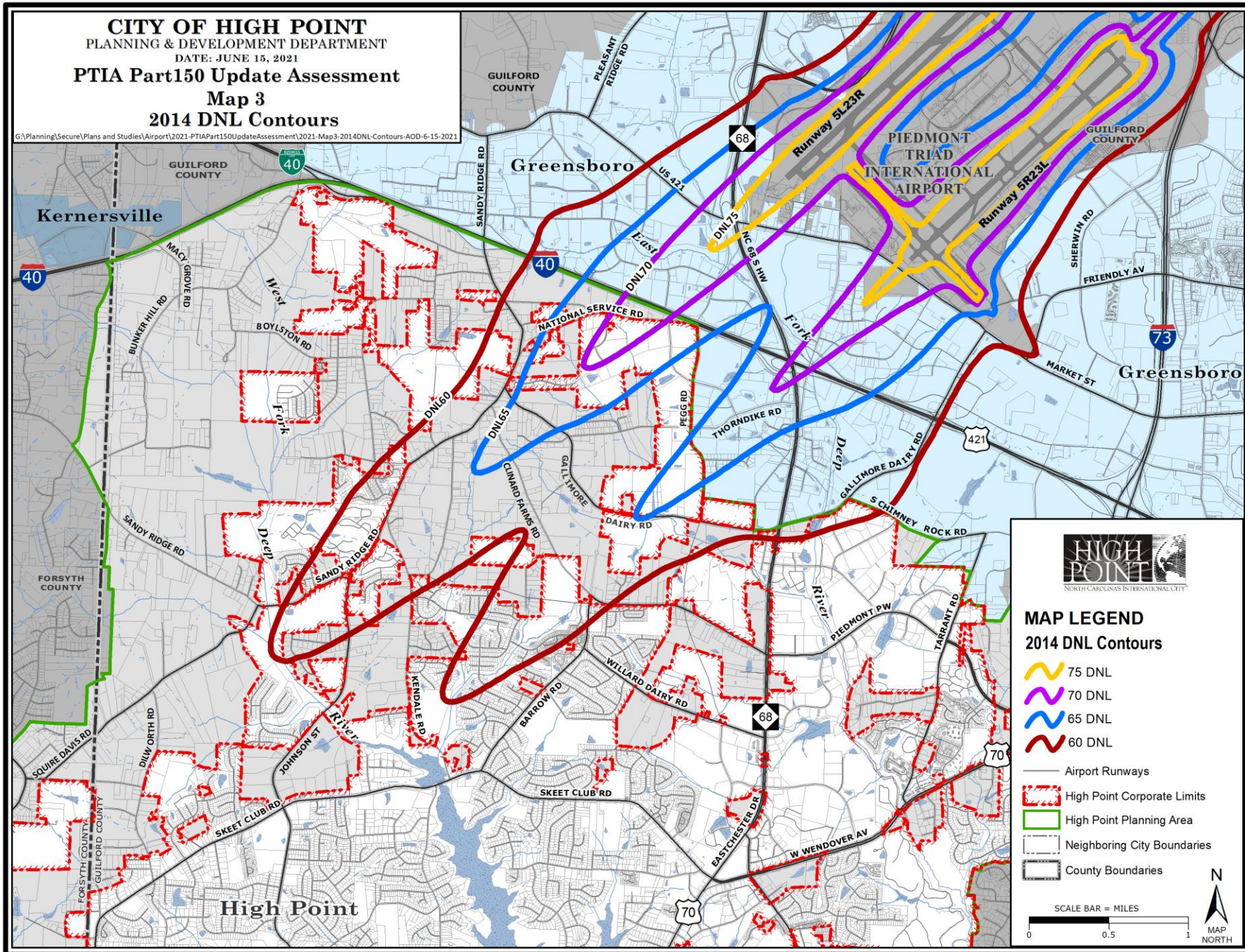
- NA 90 (1)
- NA 85 (2)
- NA 80 (5)
- Airport Runways
- High Point Corporate Limits
- High Point Planning Area
- Neighboring City Boundaries
- County Boundaries

SCALE BAR = MILES



**CITY OF HIGH POINT**  
 PLANNING & DEVELOPMENT DEPARTMENT  
 DATE: JUNE 15, 2021  
**PTIA Part150 Update Assessment**  
**Map 3**  
**2014 DNL Contours**

G:\Planning\Secure\Plans and Studies\Airport\2021-PTIA\Part150UpdateAssessment\2021-Map3-2014DNL-Contours-AOD-6-15-2021



**MAP LEGEND**  
**2014 DNL Contours**

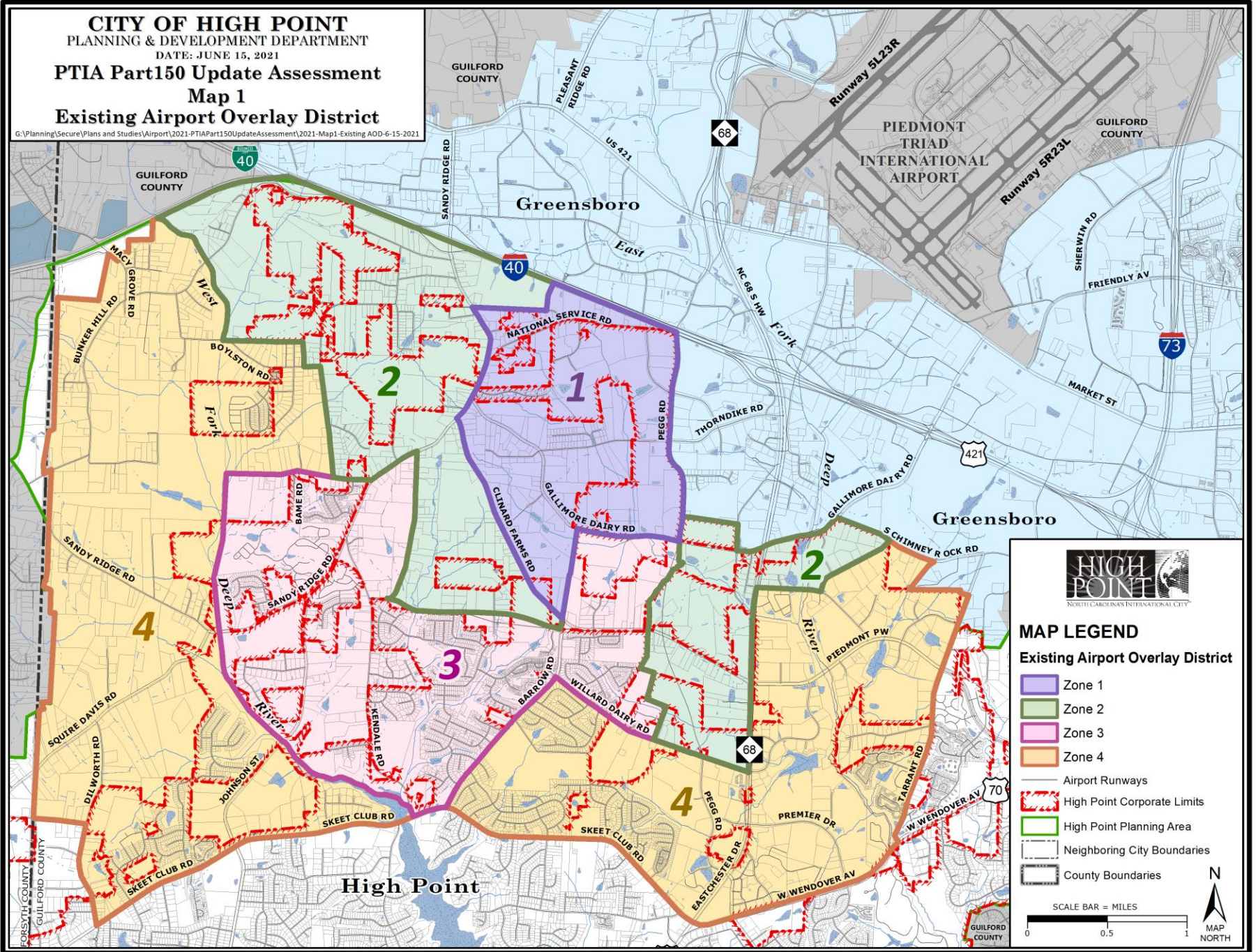
- ~ 75 DNL
- ~ 70 DNL
- ~ 65 DNL
- ~ 60 DNL
- Airport Runways
- - - High Point Corporate Limits
- High Point Planning Area
- - - Neighboring City Boundaries
- County Boundaries

SCALE BAR = MILES



**CITY OF HIGH POINT**  
**PLANNING & DEVELOPMENT DEPARTMENT**  
 DATE: JUNE 15, 2021  
**PTIA Part150 Update Assessment**  
**Map 1**  
**Existing Airport Overlay District**

G:\Planning\Secure\Plans and Studies\Airport\2021-PTIA Part150 Update Assessment\2021-Map1-Existing AOD-6-15-2021



**MAP LEGEND**

**Existing Airport Overlay District**

- Zone 1
- Zone 2
- Zone 3
- Zone 4
- Airport Runways
- High Point Corporate Limits
- High Point Planning Area
- Neighboring City Boundaries
- County Boundaries

SCALE BAR = MILES

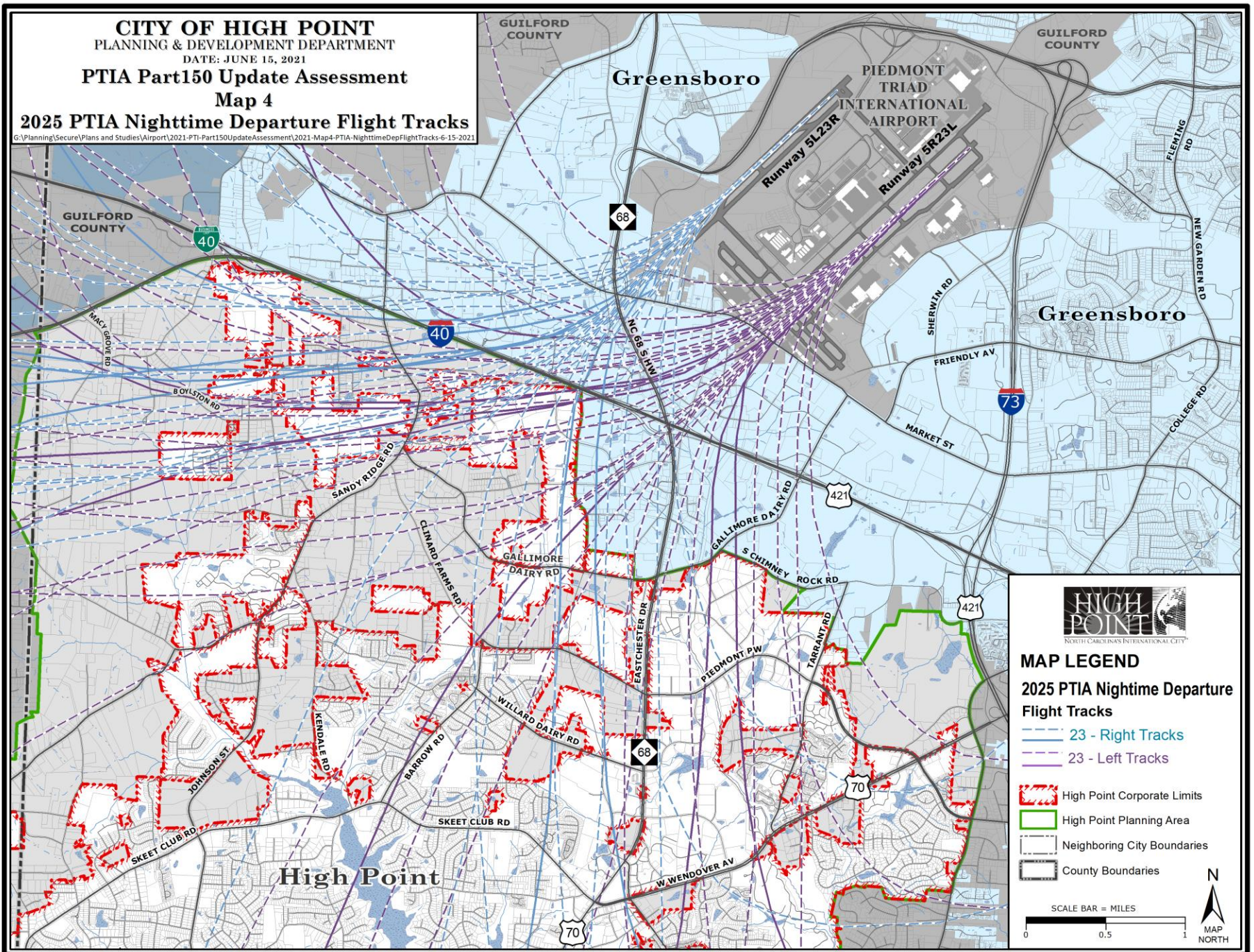


**CITY OF HIGH POINT**  
PLANNING & DEVELOPMENT DEPARTMENT  
DATE: JUNE 15, 2021

**PTIA Part150 Update Assessment**  
**Map 4**

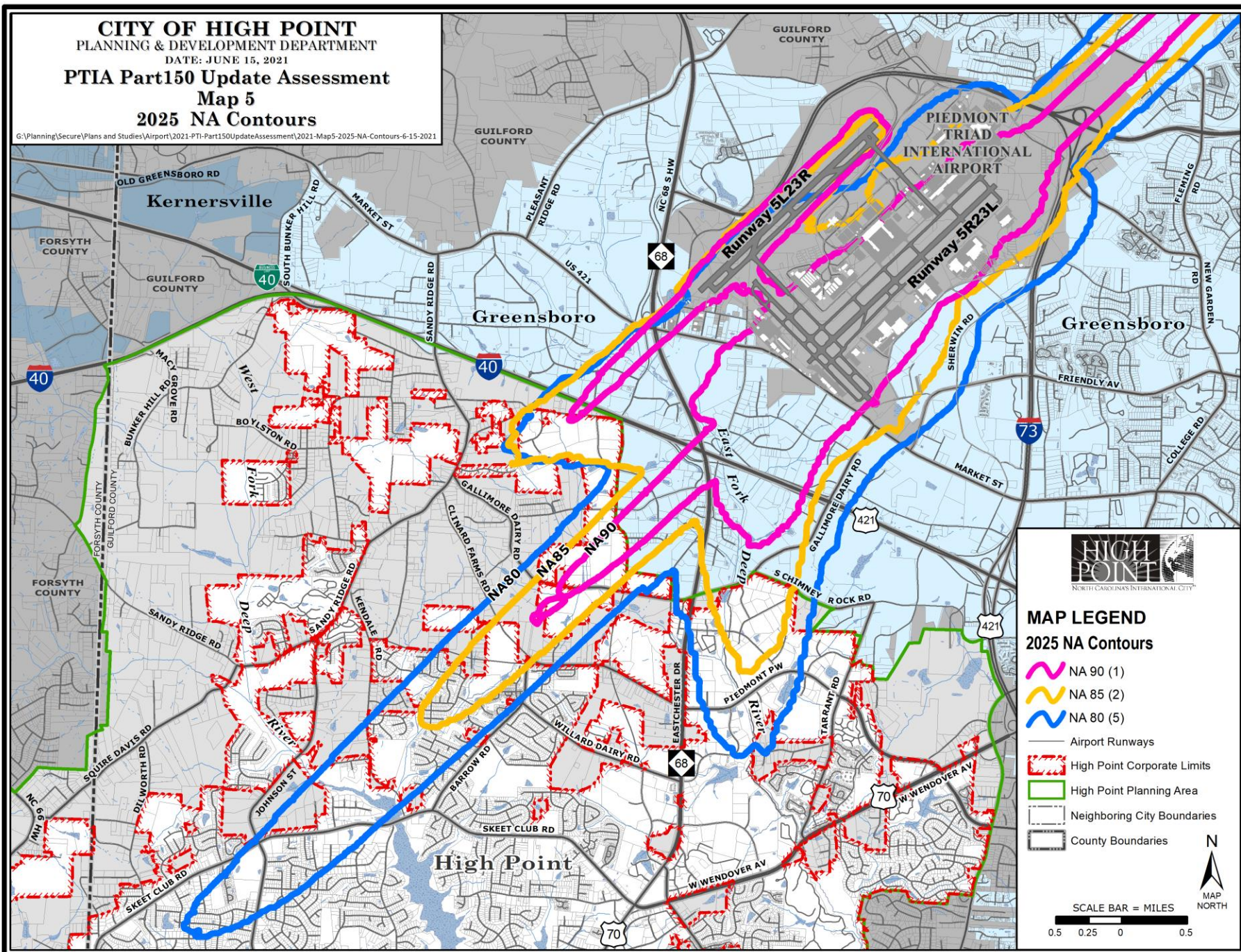
**2025 PTIA Nighttime Departure Flight Tracks**

G:\Planning\Secure\Plans and Studies\Airport\2021-PTI-Part150UpdateAssessment\2021-Map4-PTIA-NighttimeDepFlightTracks-6-15-2021

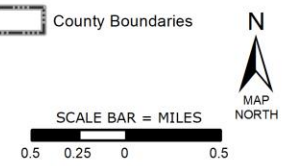


**CITY OF HIGH POINT**  
**PLANNING & DEVELOPMENT DEPARTMENT**  
 DATE: JUNE 15, 2021  
**PTIA Part150 Update Assessment**  
**Map 5**  
**2025 NA Contours**

G:\Planning\Secure\Plans and Studies\Airport\2021-PTI-Part150UpdateAssessment\2021-Map5-2025-NA-Contours-6-15-2021

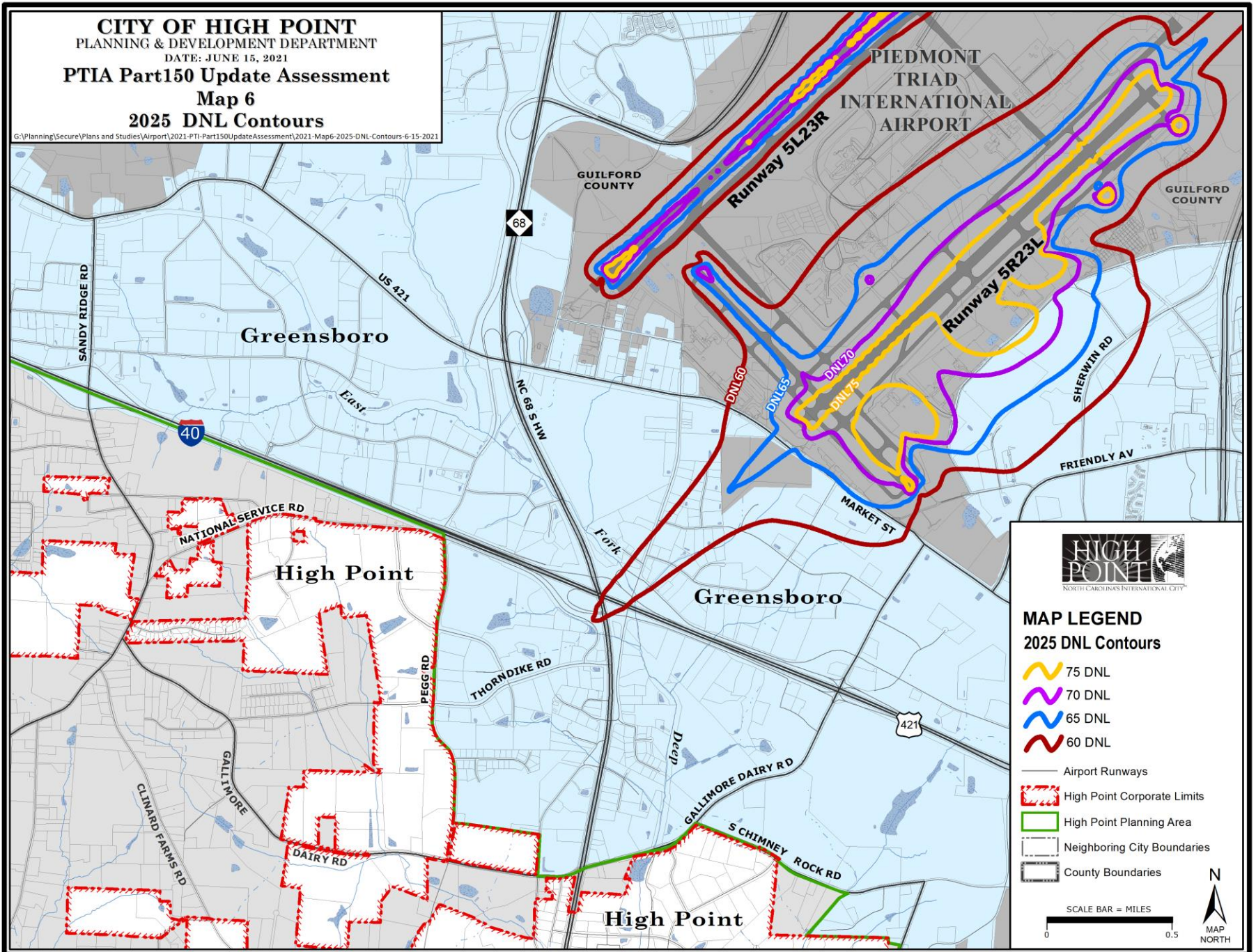


- MAP LEGEND**  
**2025 NA Contours**
- ~ NA 90 (1)
  - ~ NA 85 (2)
  - ~ NA 80 (5)
  - Airport Runways
  - High Point Corporate Limits
  - High Point Planning Area
  - Neighboring City Boundaries
  - County Boundaries



**CITY OF HIGH POINT**  
**PLANNING & DEVELOPMENT DEPARTMENT**  
 DATE: JUNE 15, 2021  
**PTIA Part150 Update Assessment**  
**Map 6**  
**2025 DNL Contours**

G:\Planning\Secure\Plans and Studies\Airport\2021-PTI-Part150UpdateAssessment\2021-Map6-2025-DNL-Contours-6-15-2021



**MAP LEGEND**  
**2025 DNL Contours**

- ~ 75 DNL
- ~ 70 DNL
- ~ 65 DNL
- ~ 60 DNL
- Airport Runways
- - - High Point Corporate Limits
- High Point Planning Area
- - - Neighboring City Boundaries
- County Boundaries

SCALE BAR = MILES  
 0 0.5





GUILFORD  
COUNTY

PLEASANT RIDGE RD  
US 421

proposed 3rd Runway

NC 68 S HW

JOSEPH M BRYAN BV

Runway 5L23R

GUILFORD  
COUNTY

Greensboro

MARKET ST

Runway 5R23L

Greensboro

SHERWIN  
RD

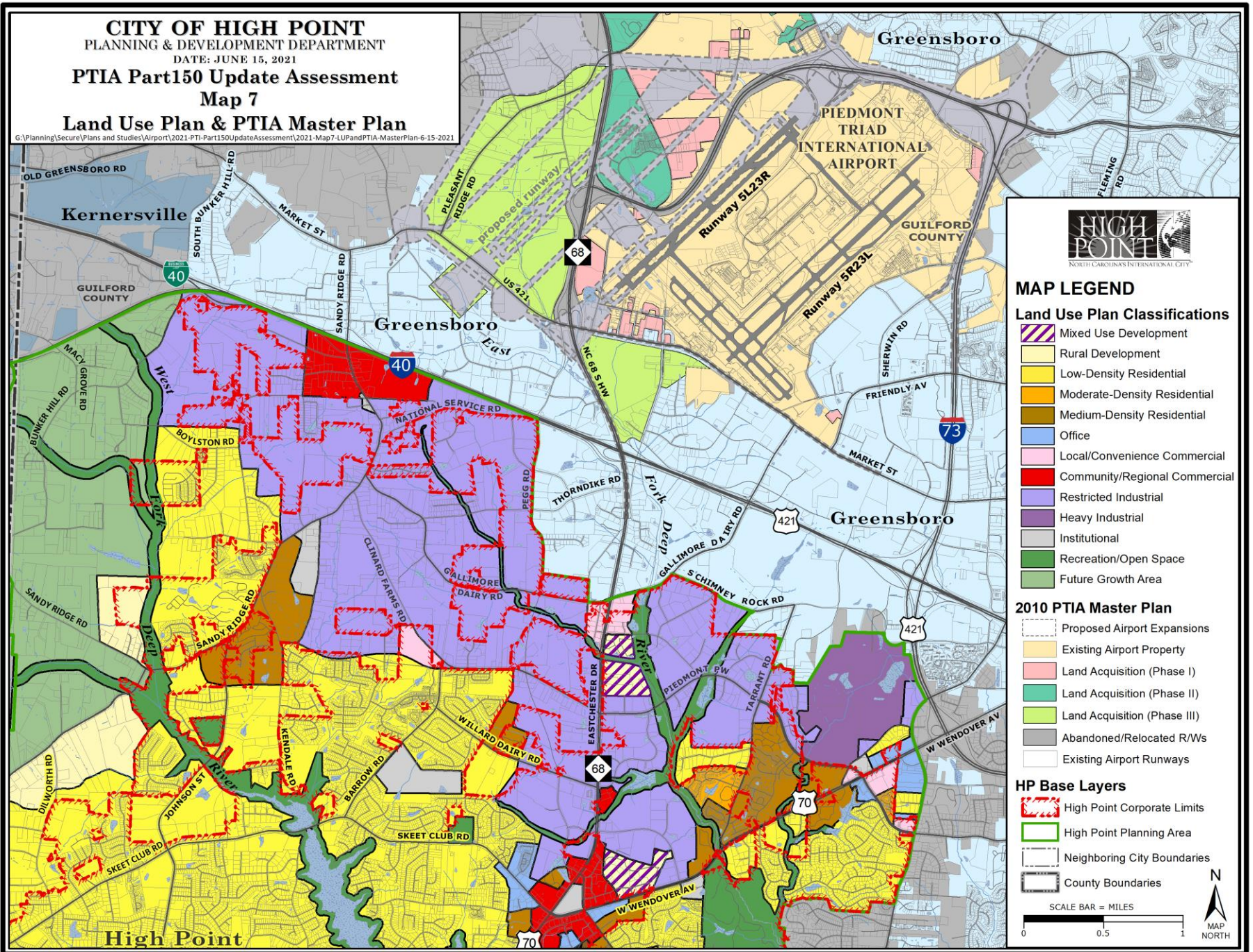
FRIENDLY AV



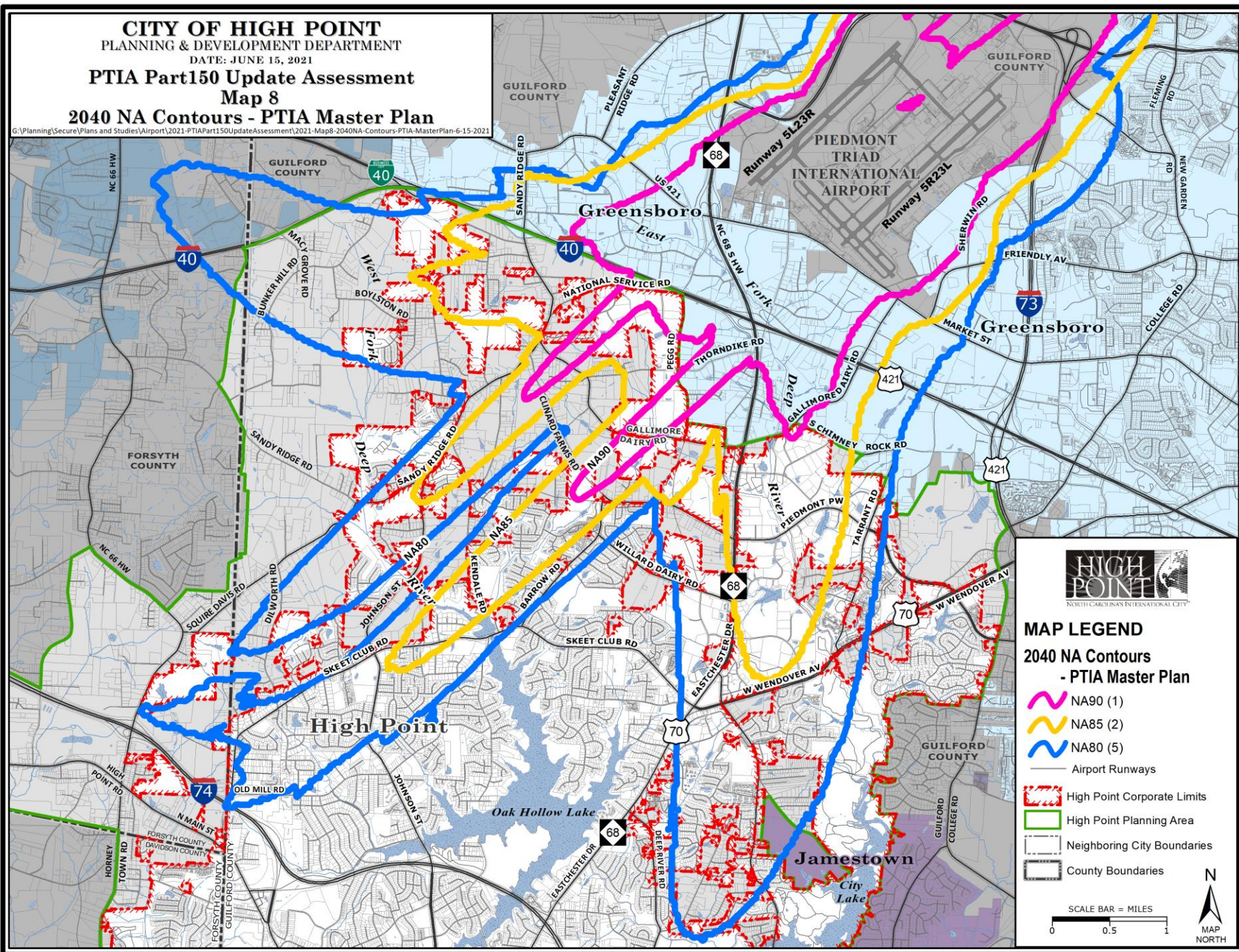
NATIONAL SERVICE RD

**CITY OF HIGH POINT**  
**PLANNING & DEVELOPMENT DEPARTMENT**  
 DATE: JUNE 15, 2021  
**PTIA Part150 Update Assessment**  
**Map 7**  
**Land Use Plan & PTIA Master Plan**

G:\Planning\Secure\Plans and Studies\Airport\2021-PTI-Part150UpdateAssessment\2021-Map7-LUPandPTIA-MasterPlan-6-15-2021

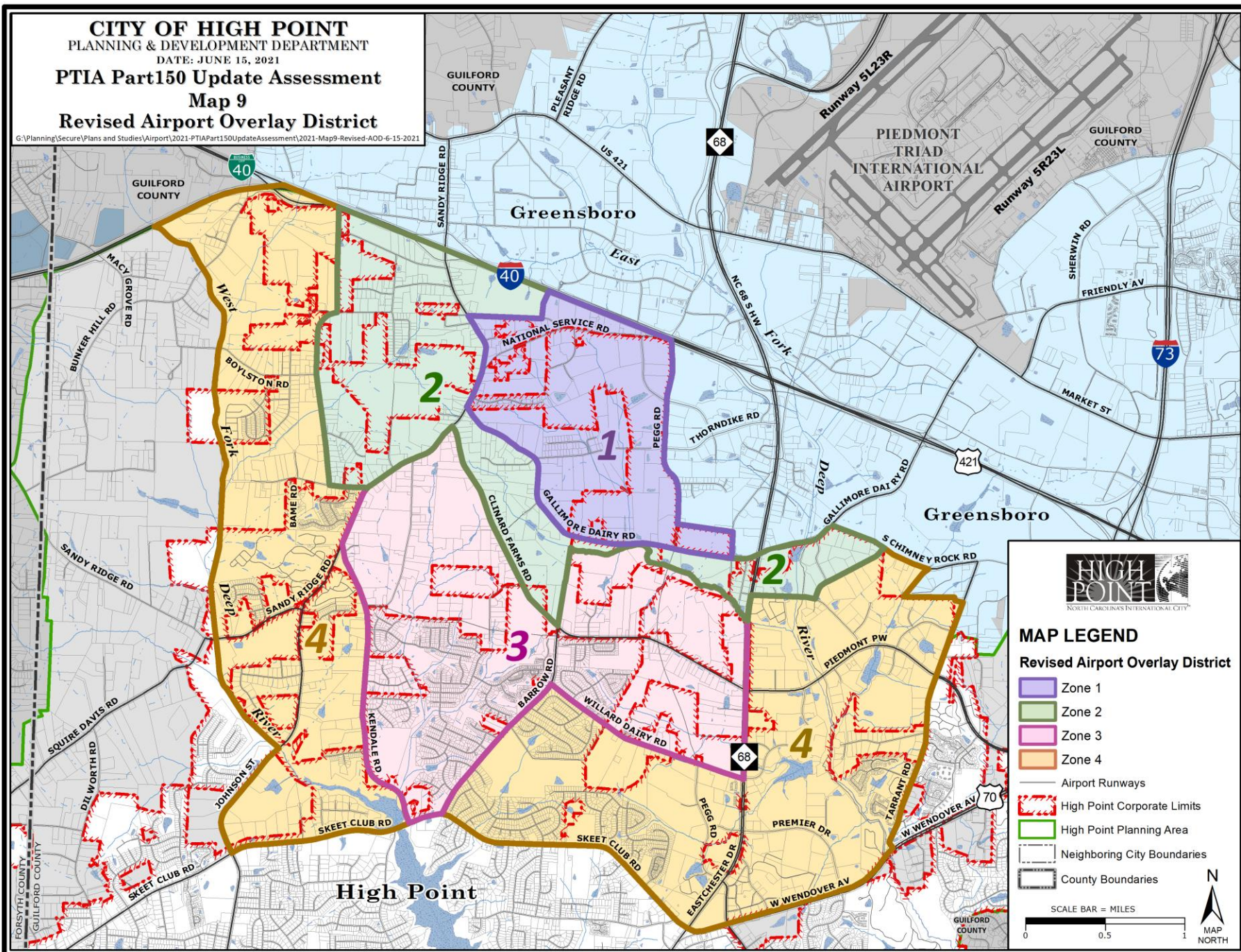


G:\Planning\Secure\Plans and Studies\Airport\2021-PTIA Part 150 Update Assessment\2021-Map8-2040NA-Contours-PTIA-MasterPlan-6-15-2021



**CITY OF HIGH POINT**  
**PLANNING & DEVELOPMENT DEPARTMENT**  
 DATE: JUNE 15, 2021  
**PTIA Part150 Update Assessment**  
**Map 9**  
**Revised Airport Overlay District**

G:\Planning\Secure\Plans and Studies\Airport\2021-PTIA Part150 Update Assessment\2021-Map9-Revised-AOD-6-15-2021



**MAP LEGEND**

**Revised Airport Overlay District**

- Zone 1
- Zone 2
- Zone 3
- Zone 4
- Airport Runways
- High Point Corporate Limits
- High Point Planning Area
- Neighboring City Boundaries
- County Boundaries

SCALE BAR = MILES



CITY OF HIGH POINT  
PLANNING & DEVELOPMENT DEPARTMENT

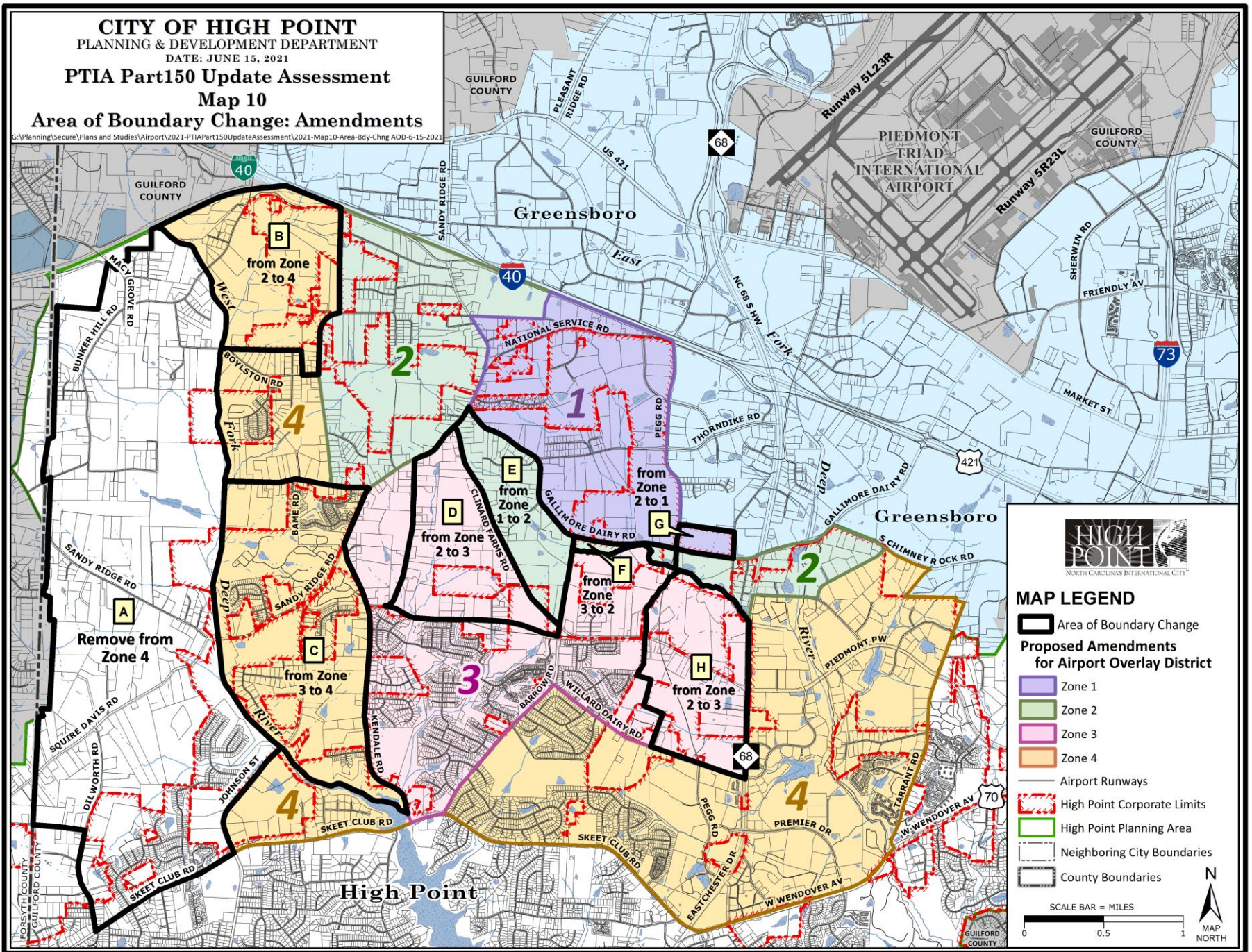
DATE: JUNE 15, 2021

PTIA Part150 Update Assessment

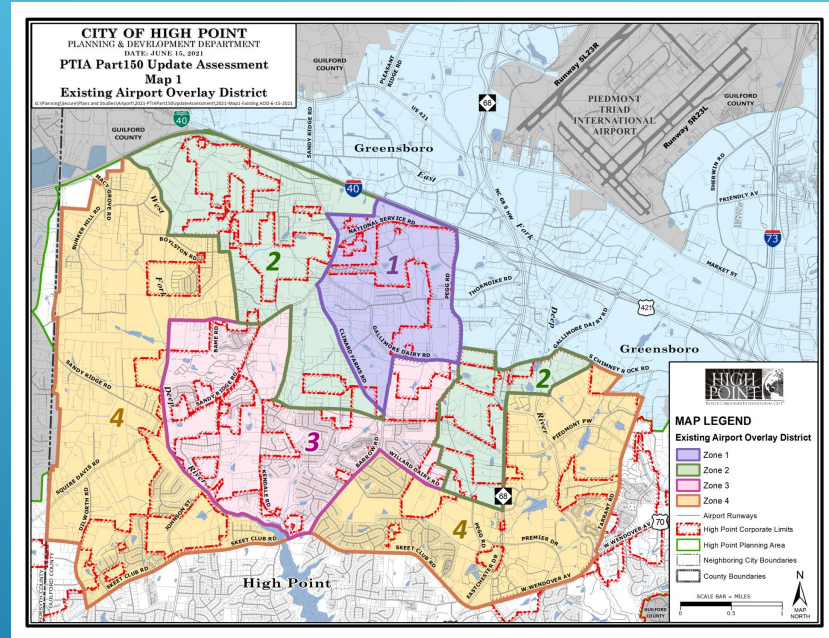
Map 10

Area of Boundary Change: Amendments

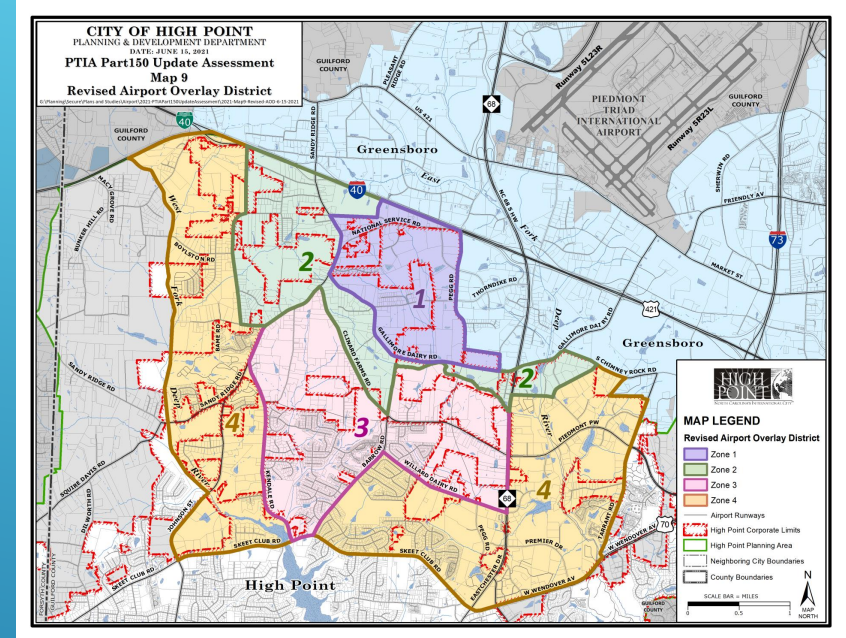
C:\Planning\Secure\Plans and Studies\Airport\2021-PTIA\Part150UpdateAssessment\2021-Map10-Area-Bdy-Chng AOD-6-15-2021



# EXISTING AOD



# RECOMMENDED AOD



# QUESTIONS?